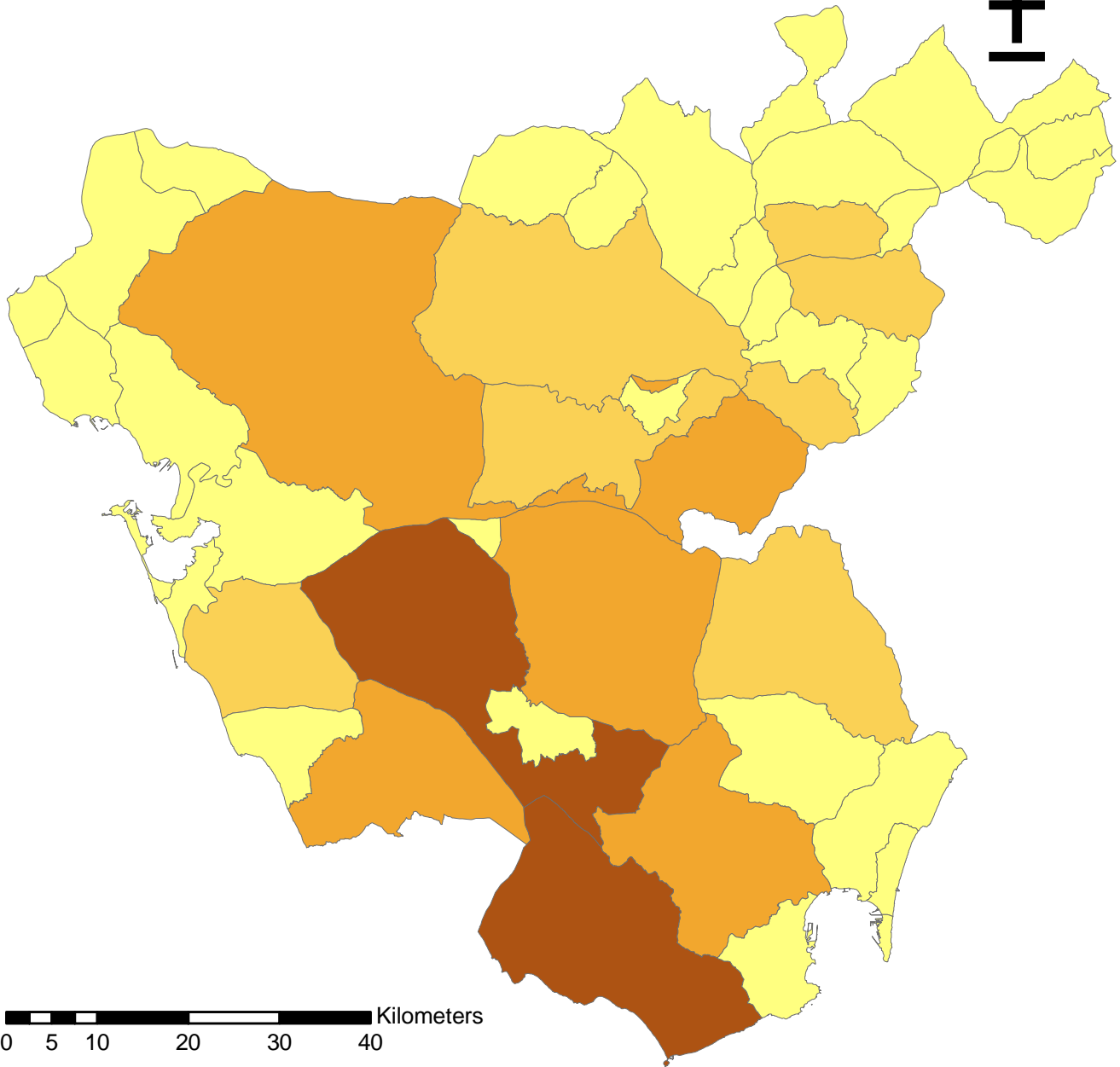


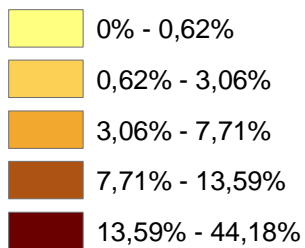
# MUNICIPIOS CON MAYOR SUPERFICIE EN PRODUCCIÓN ECOLÓGICA



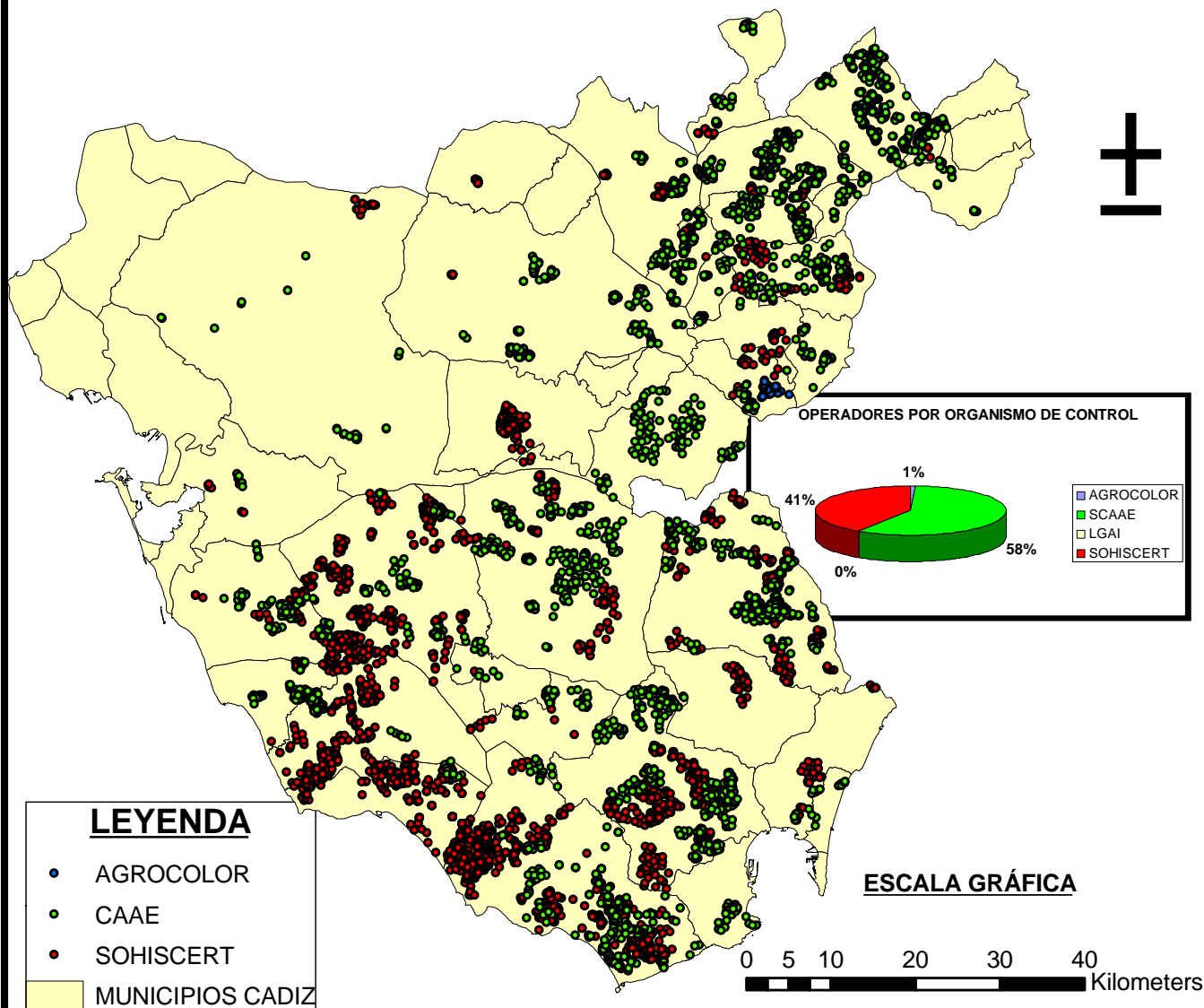
0 5 10 20 30 40 Kilometers

## LEYENDA

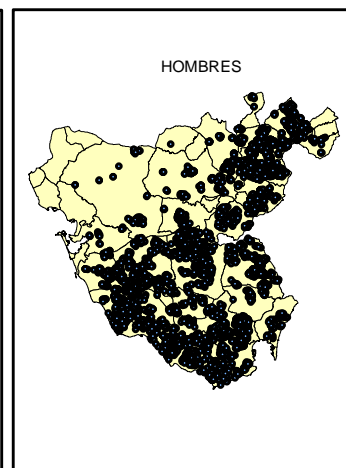
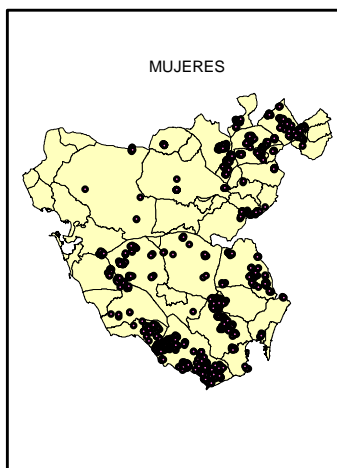
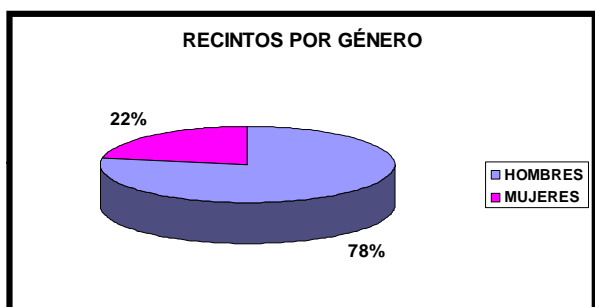
**PORCENTAJES RESPECTO AL TOTAL DE LA SUPERF. ECOL. DE LA PROVINCIA**



# PROVINCIA DE CÁDIZ RECINTOS POR O.C (ANÁLISIS POR GÉNERO)

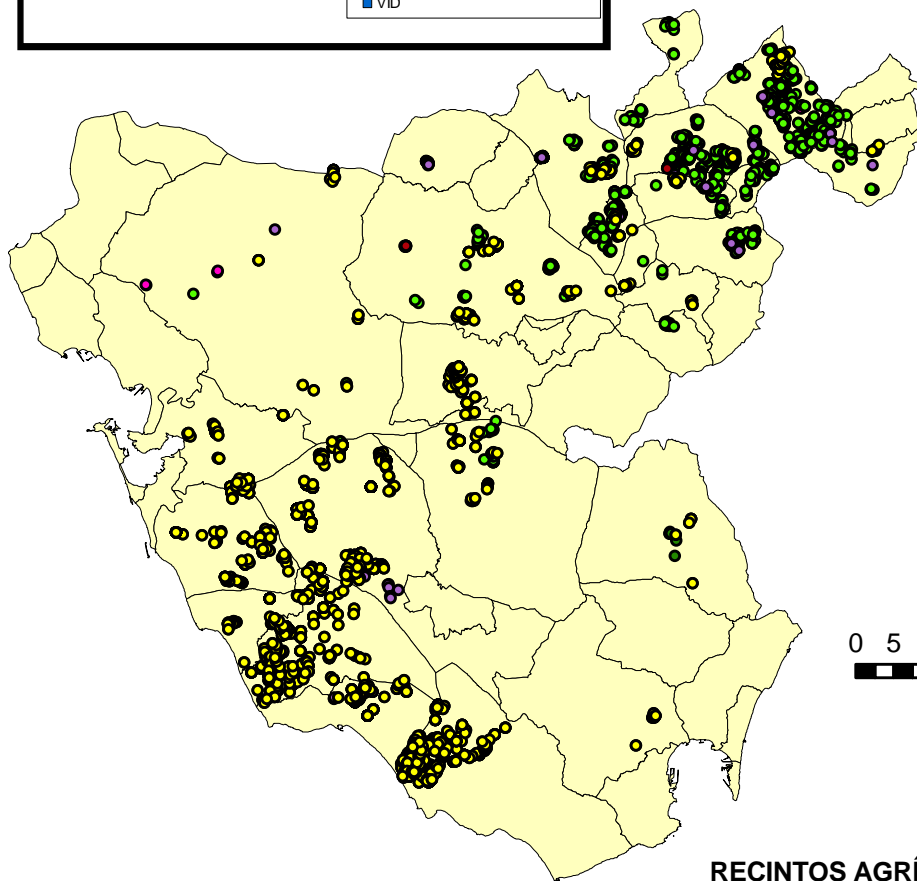
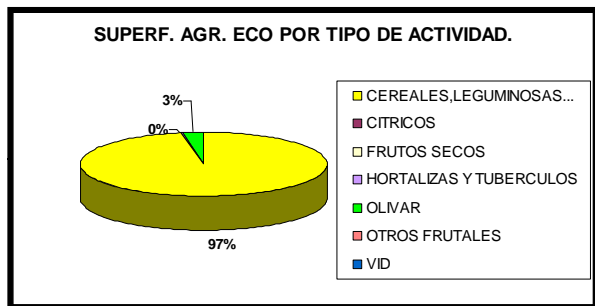


## RECINTOS POR GÉNERO 2007

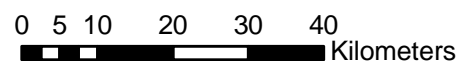


# PROVINCIA DE CÁDIZ

## RECINTOS AGRÍCOLAS ECOLÓGICOS 2007



**ESCALA GRÁFICA**

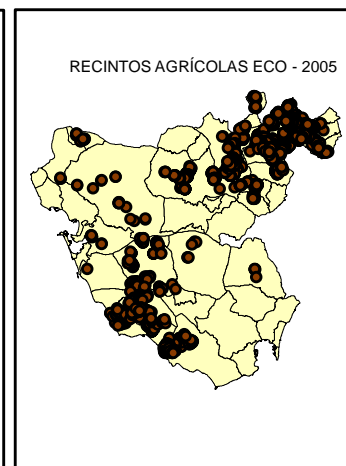
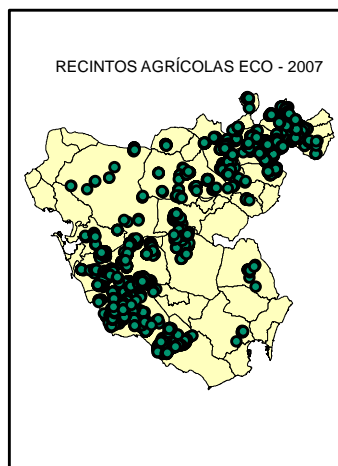


### RECINTOS AGRÍCOLAS ECOLÓGICOS EVOLUCIÓN AÑOS 2005 Y 2007

#### LEYENDA

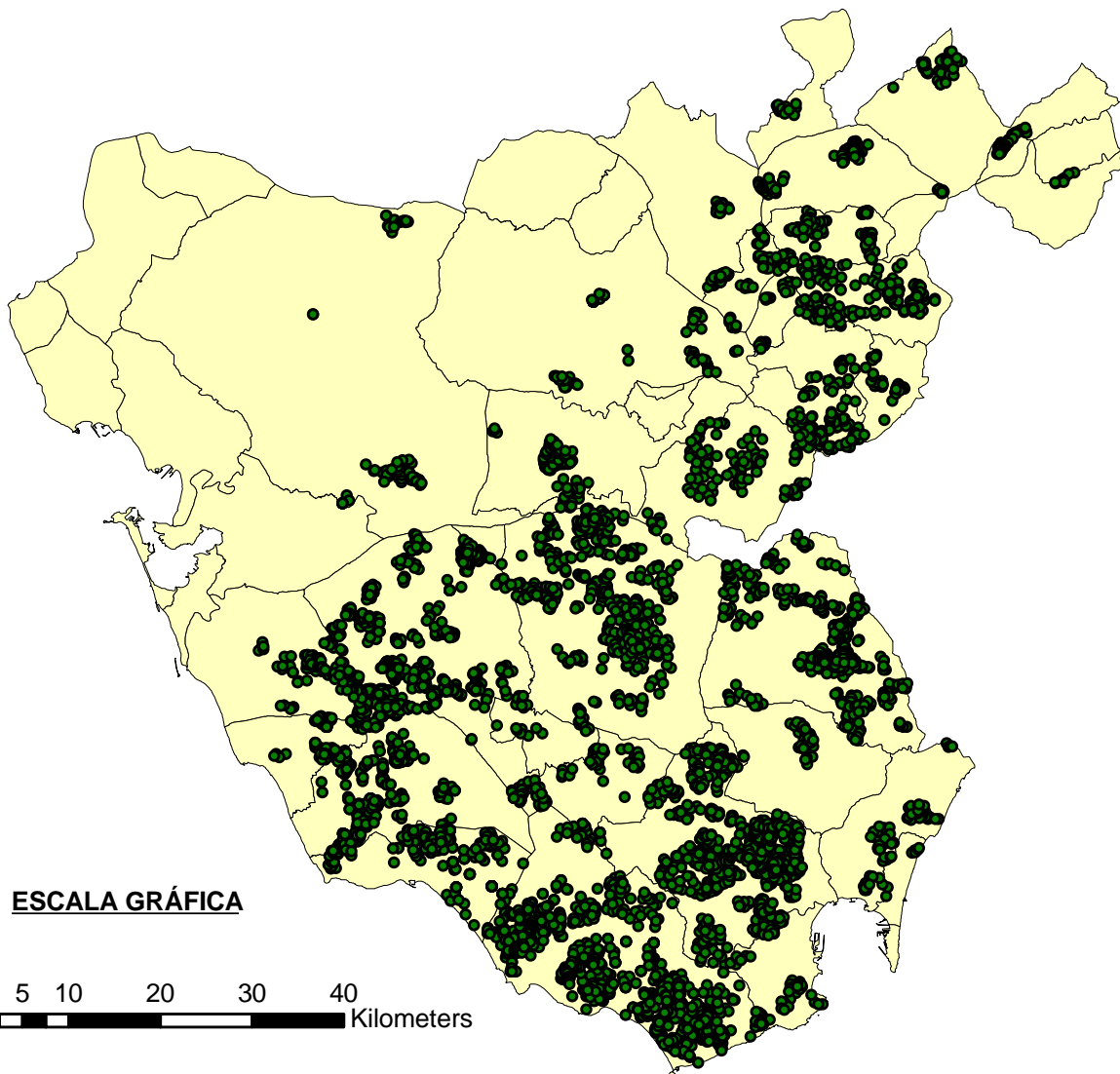
- CEREALES, LEGUMINOSAS Y OTROS
- CITRICOS
- FRUTOS SECOS
- HORTALIZAS Y TUBERCULOS
- OLIVAR
- OTROS FRUTALES
- VID

MUNICIPIOS CADIZ

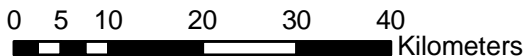


# PROVINCIA DE CÁDIZ

## RECINTOS GANADEROS ECOLÓGICOS 2007



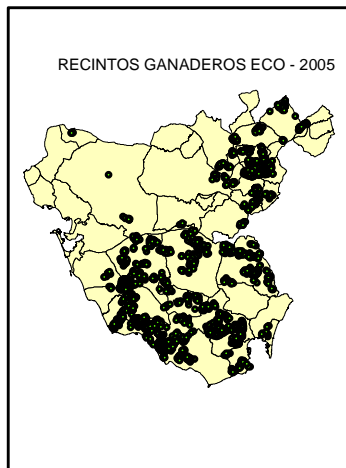
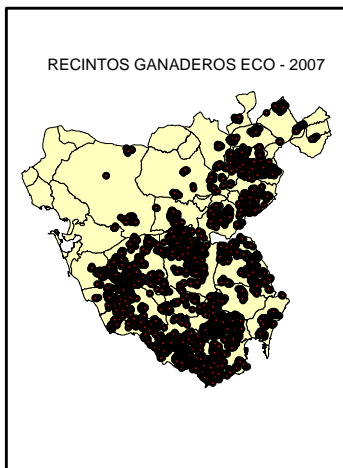
### ESCALA GRÁFICA



### RECINTOS GANADEROS ECOLÓGICOS EVOLUCIÓN AÑOS 2005 Y 2007

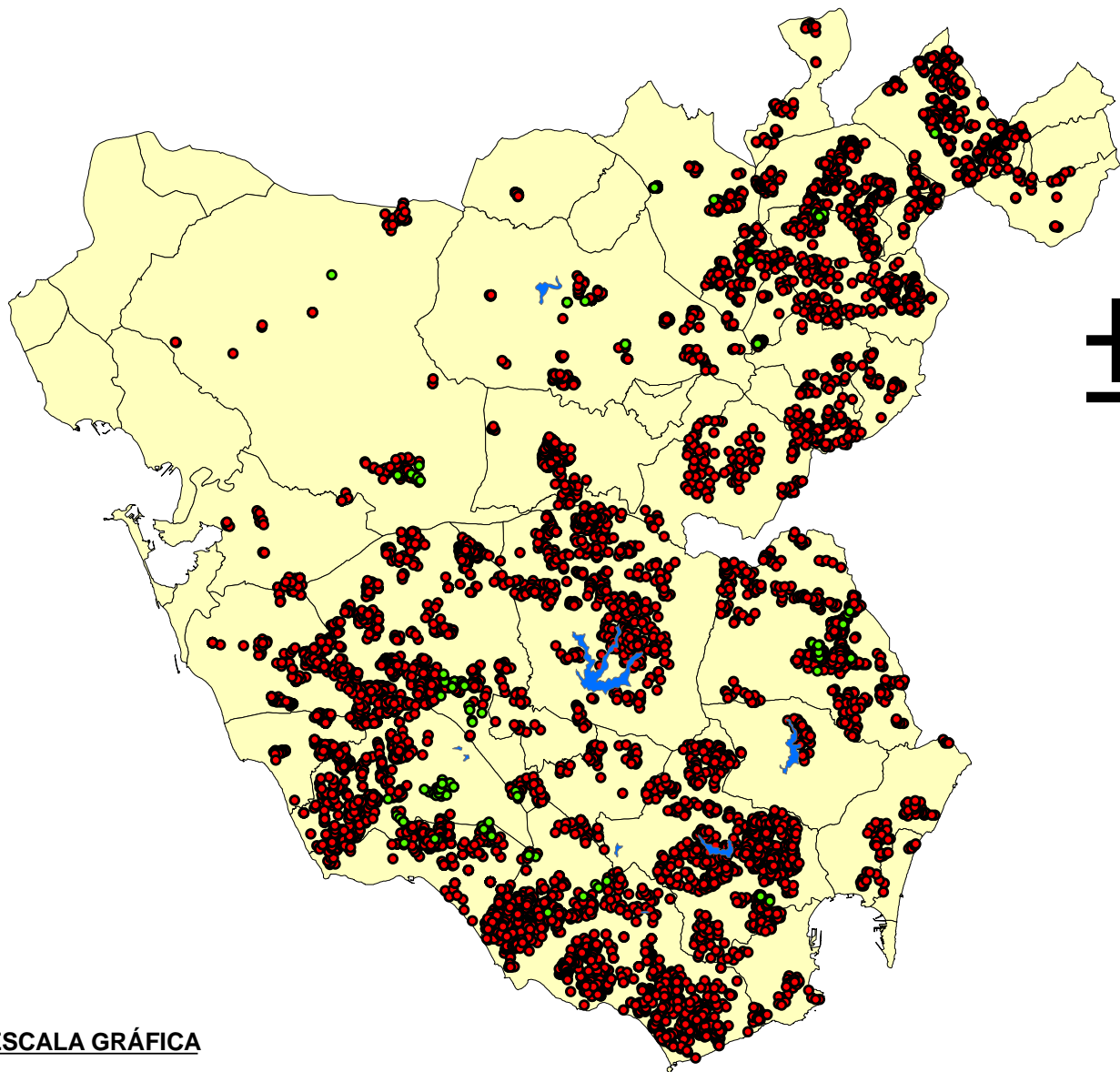
**LEYENDA**

- PASTOS PRADERAS Y FORRAJES
- MUNICIPIOS CADIZ



# PROVINCIA DE CÁDIZ

## RECINTOS POR USO (SECANO - REGADIO)



### ESCALA GRÁFICA

