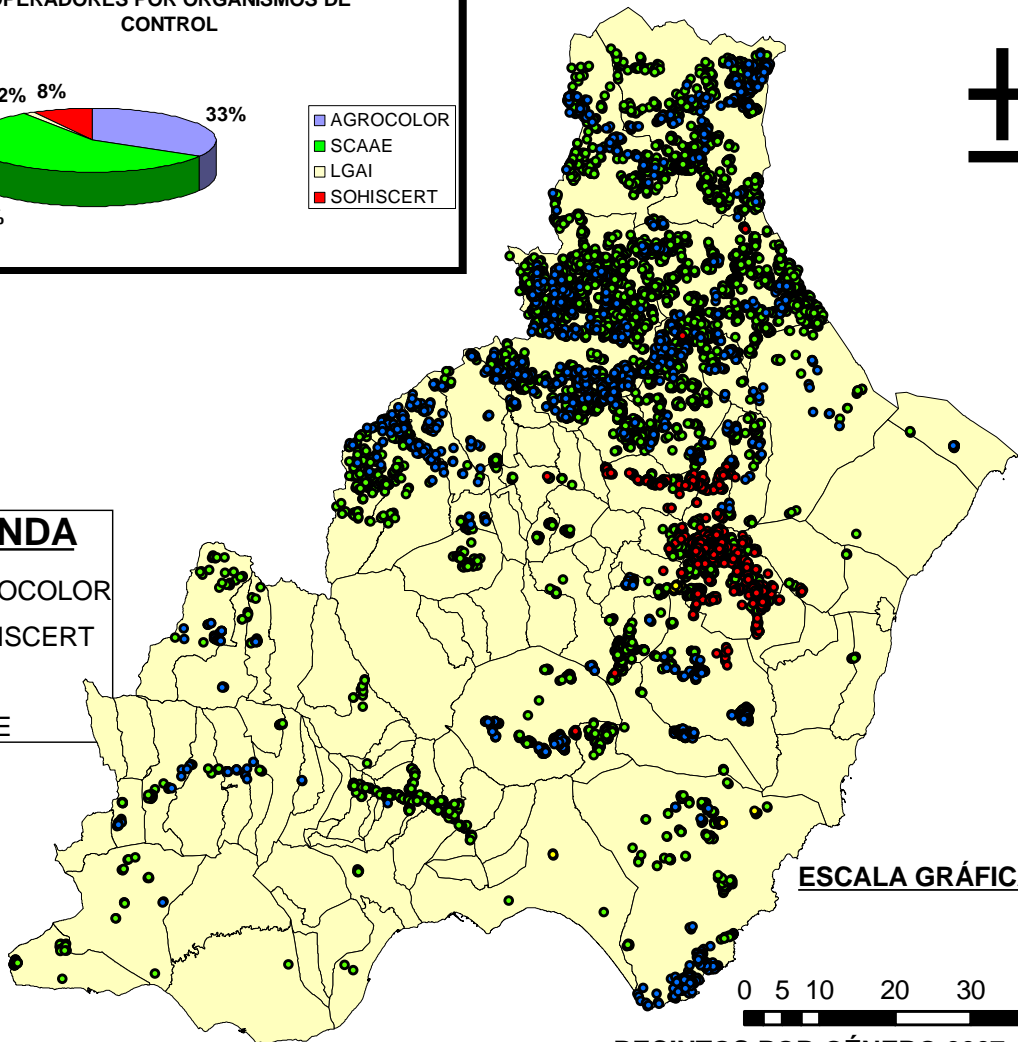
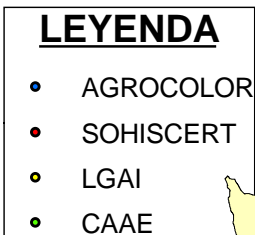
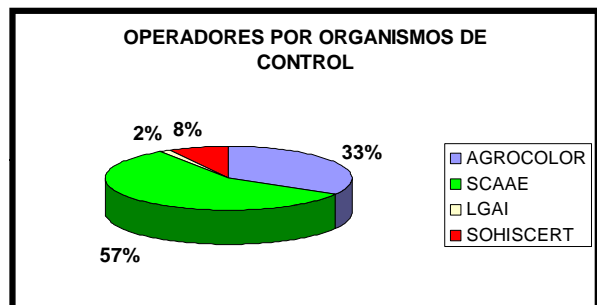
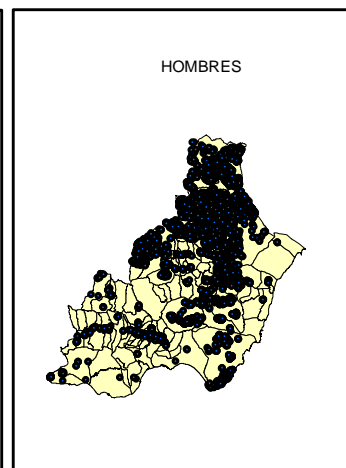
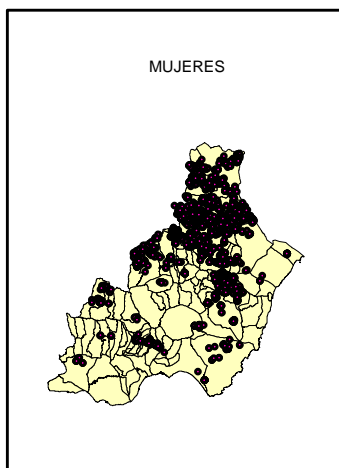


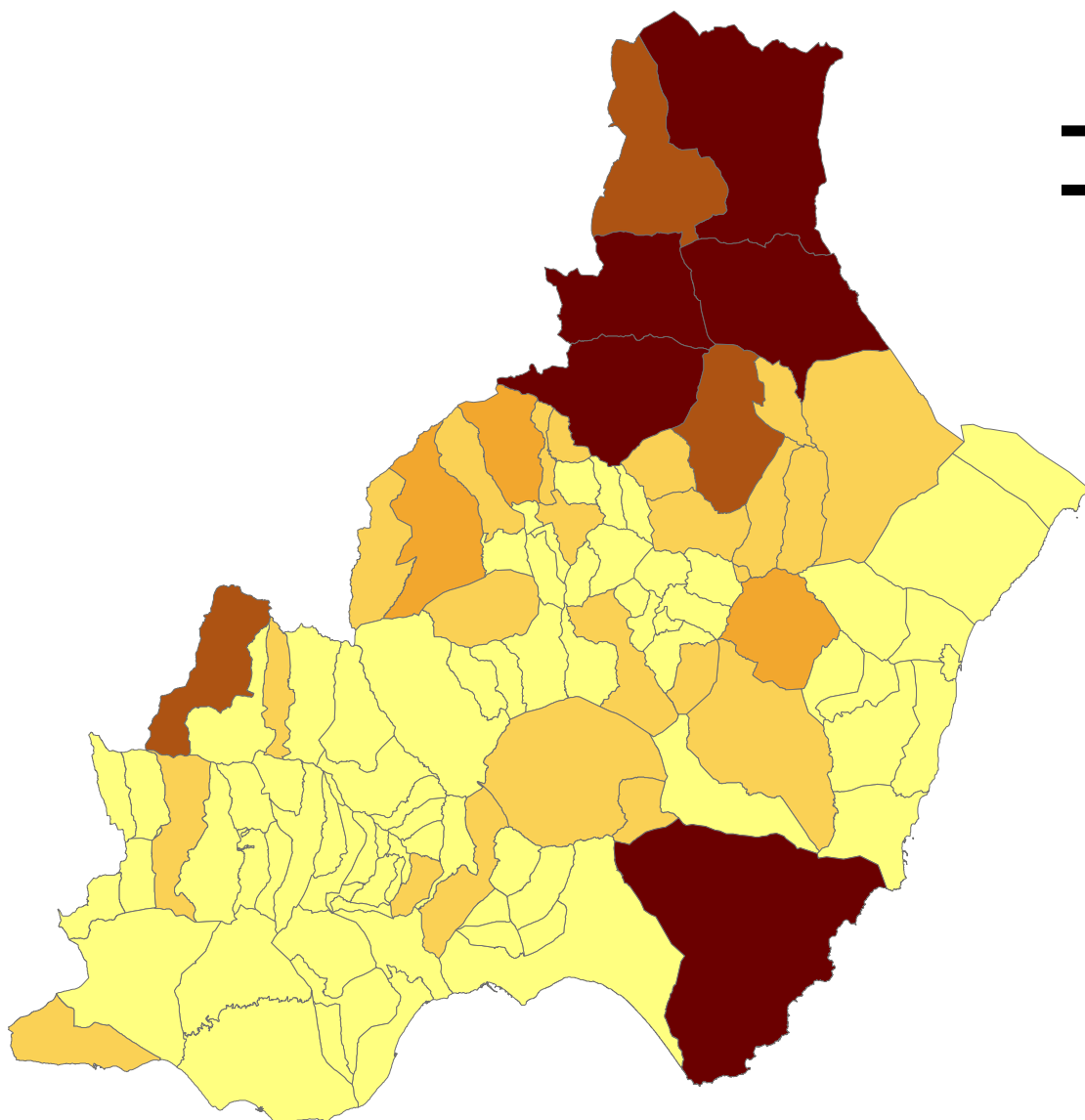
PROVINCIA DE ALMERIA RECINTOS POR O.C (ANÁLISIS POR GÉNERO)



RECINTOS POR GÉNERO 2007








MUNICIPIOS CON MAYOR SUPERFICIE EN PRODUCCIÓN ECOLÓGICA



0 5 10 20 30 40
Kilometers

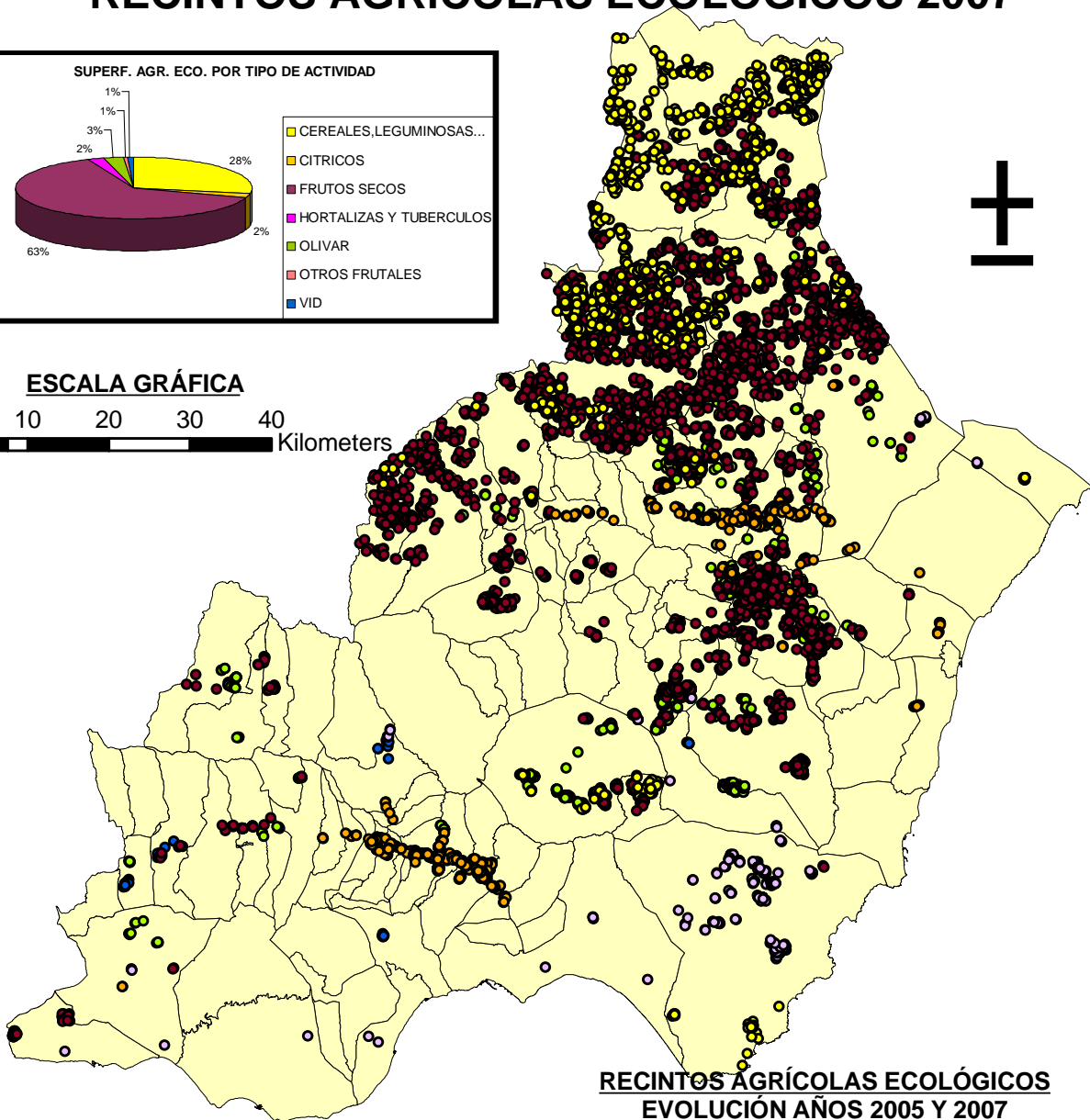
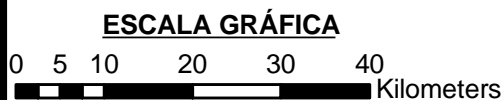
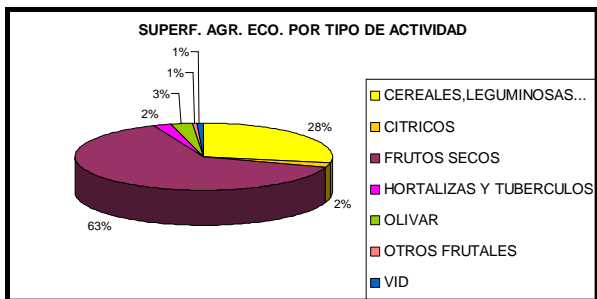
LEYENDA

PORCENTAJES RESPECTO A LA SUPERF. ECOL. TOTAL DE LA PROVINCIA

	0% - 0,20%
	0,20% - 0,81%
	0,81% - 2,12%
	2,12% - 5,56%
	5,56% - 15,64%

PROVINCIA DE ALMERÍA

RECINTOS AGRÍCOLAS ECOLÓGICOS 2007



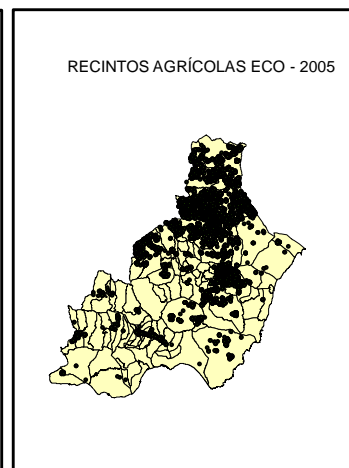
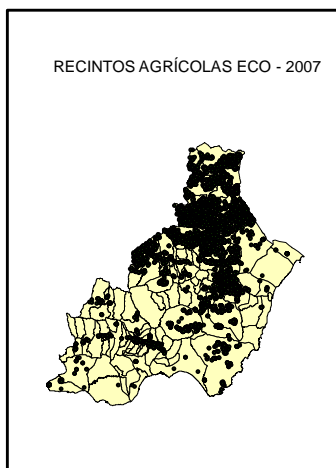
RECINTOS AGRÍCOLAS ECOLÓGICAS EVOLUCIÓN AÑOS 2005 Y 2007

LEYENDA

- CEREALES, LEGUMINOSAS Y OTROS
- CITRICOS
- FRUTOS SECOS
- HORTALIZAS Y TUBERCULOS
- OLIVAR
- OTROS FRUTALES
- VID

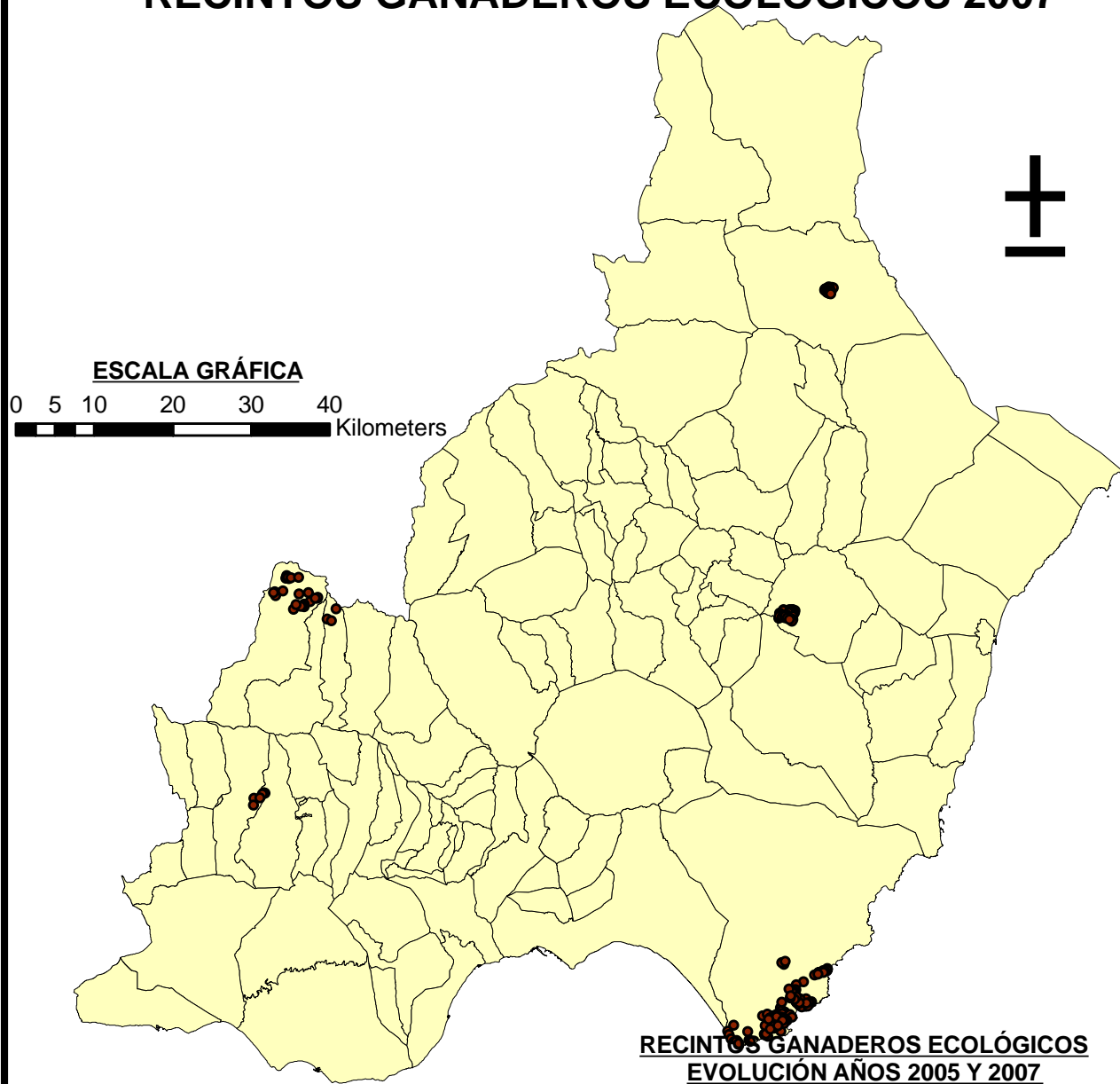
MUNICIPIOS ALMERIA

ZONIFICACIÓN DE LA PRODUCCIÓN ECOLÓGICA ANDALUZA
AUTOR: ANTONIO BRAVO RODRIGUEZ



PROVINCIA DE ALMERÍA

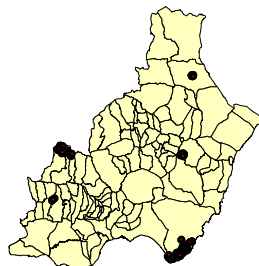
RECINTOS GANADEROS ECOLÓGICOS 2007



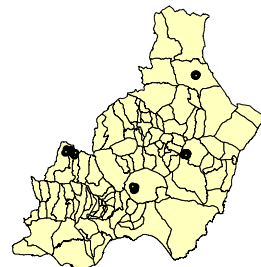
LEYENDA

- PASTOS PRADERAS Y FORRAJES
- MUNICIPIOS ALMERIA

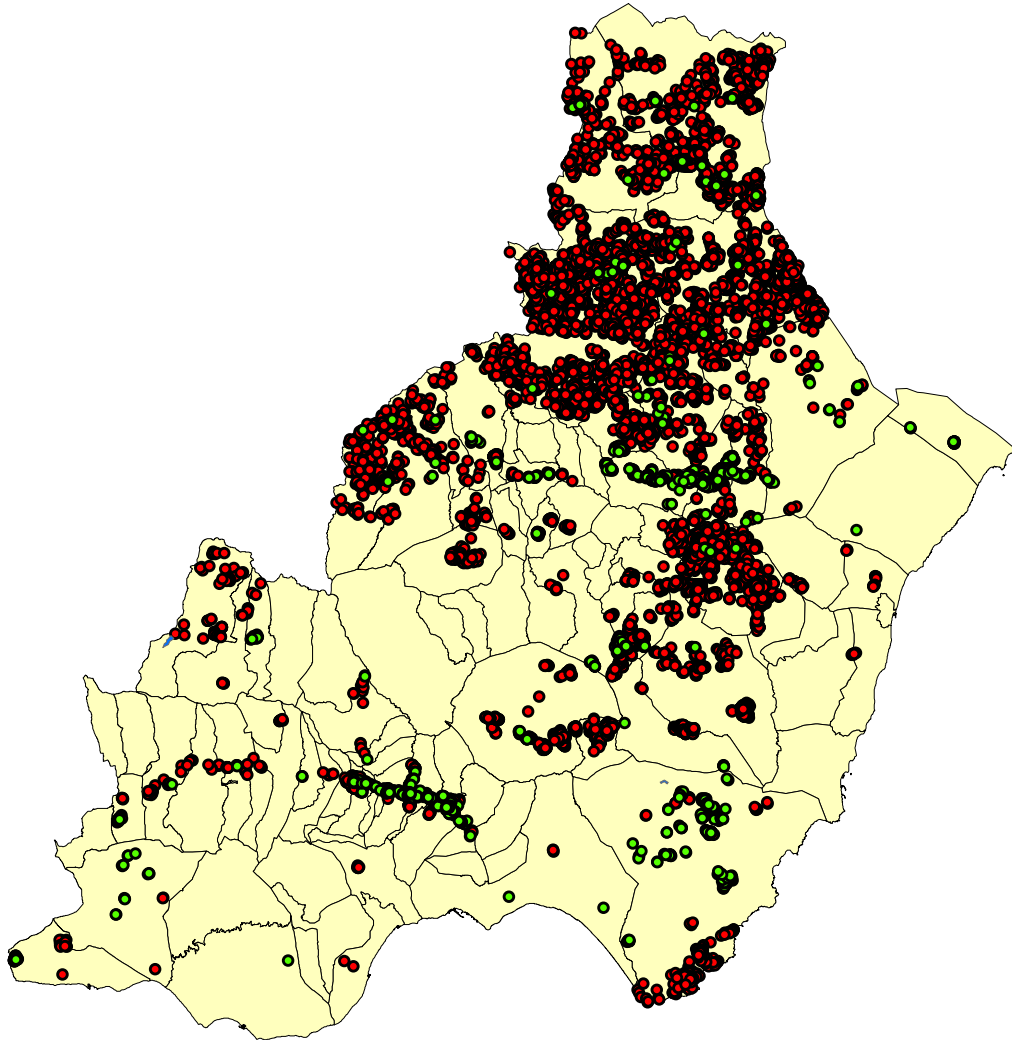
RECINTOS GANADEROS ECO - 2007



RECINTOS GANADEROS ECO - 2005



PROVINCIA DE ALMERIA RECINTOS POR USO (SECANO - REGADIO)



ESCALA GRÁFICA

