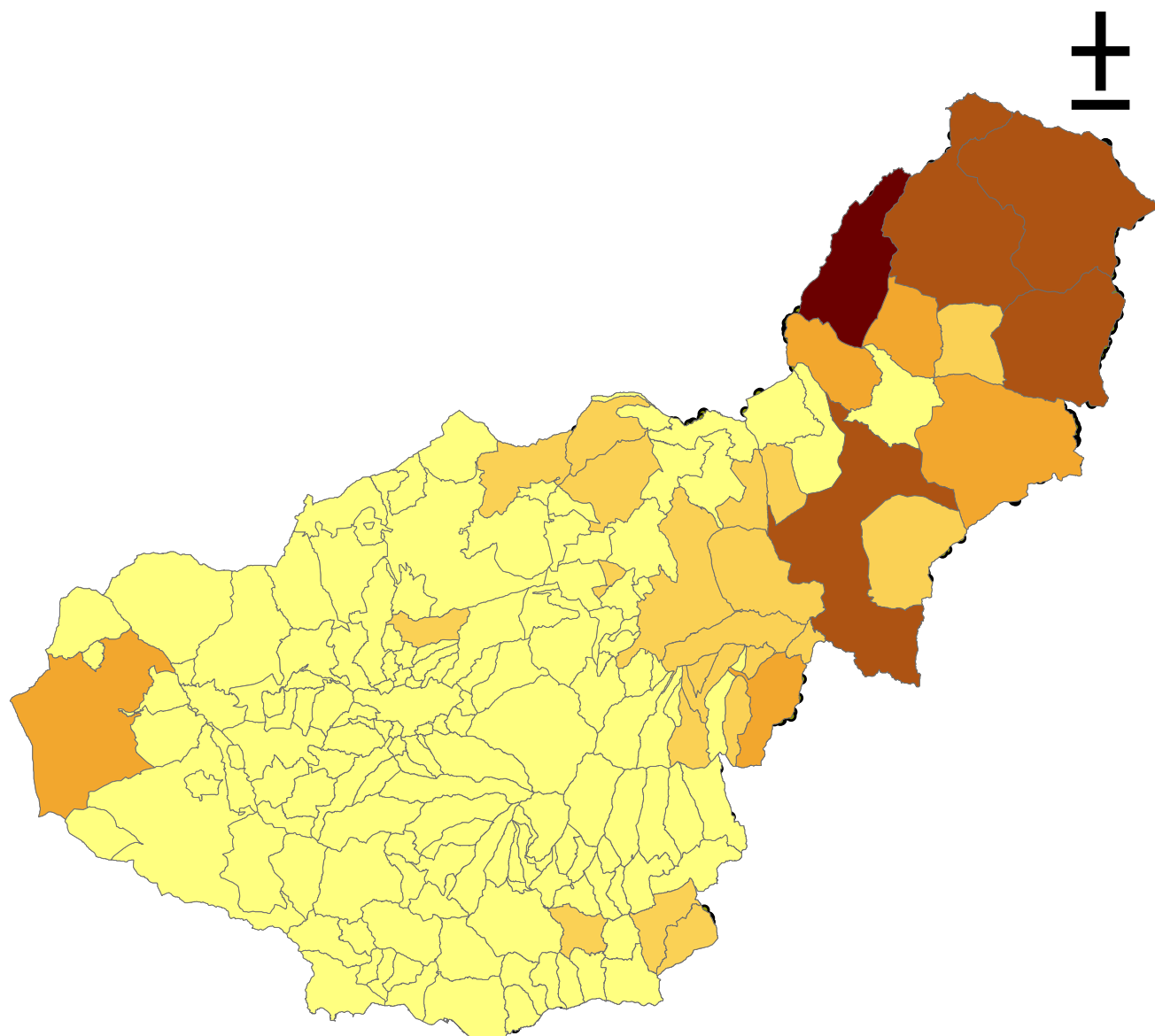


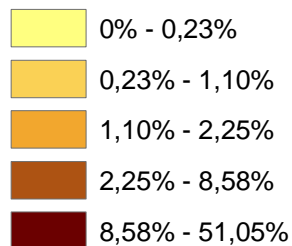
# MUNICIPIOS CON MAYOR SUPERFICIE EN PRODUCCIÓN ECOLÓGICA



0 8.475 16.950 33.900 50.850 67.800  
Meters

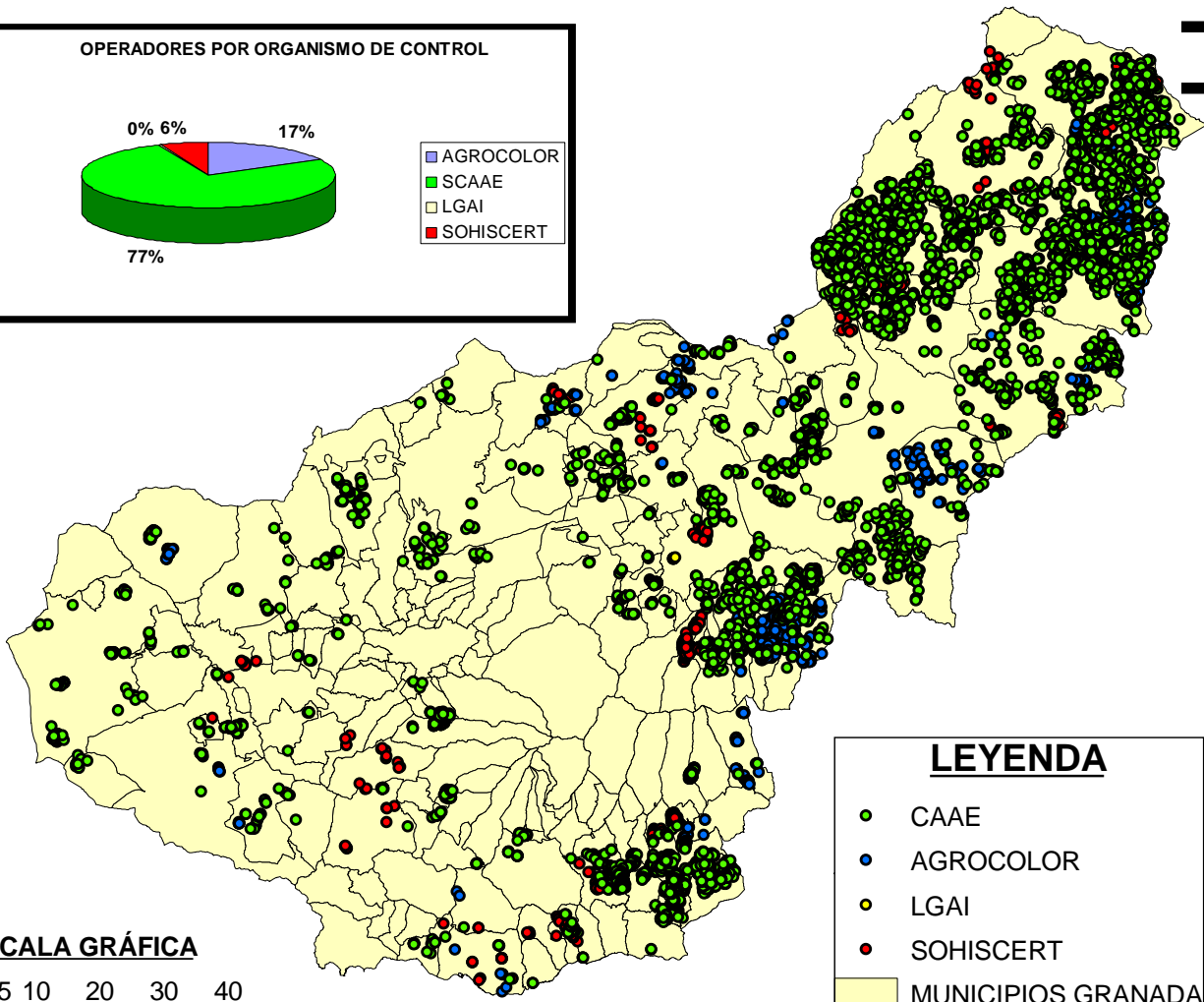
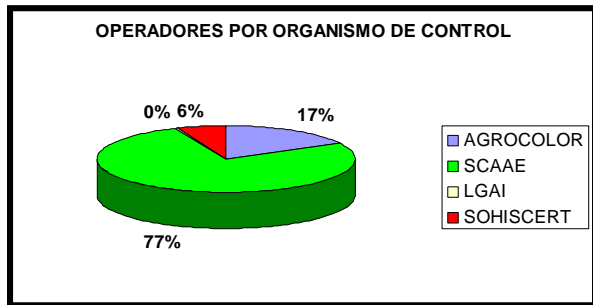
## LEYENDA

### PORCENTAJES CON RESPECTO AL TOTAL DE LA SUP. ECOL. DE LA PROVINCIA

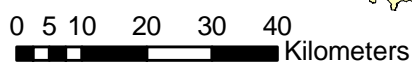


# PROVINCIA DE GRANADA

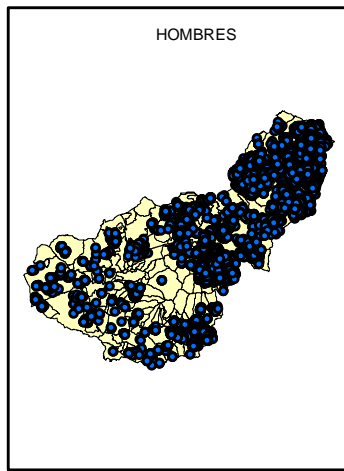
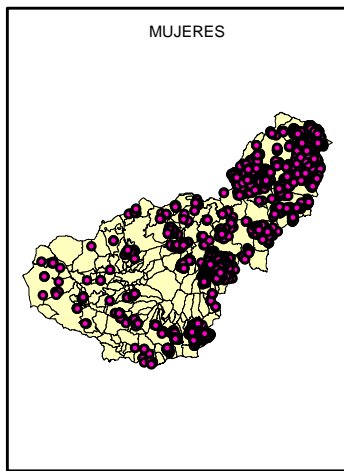
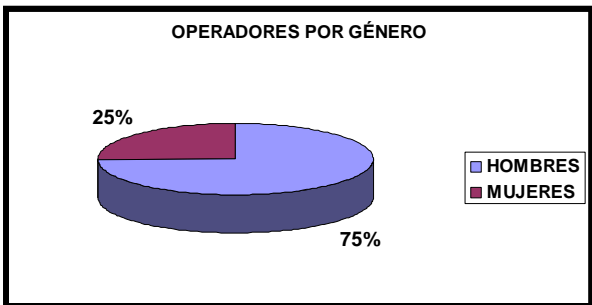
## RECINTOS POR O.C (ANÁLISIS POR GÉNERO)



**ESCALA GRÁFICA**

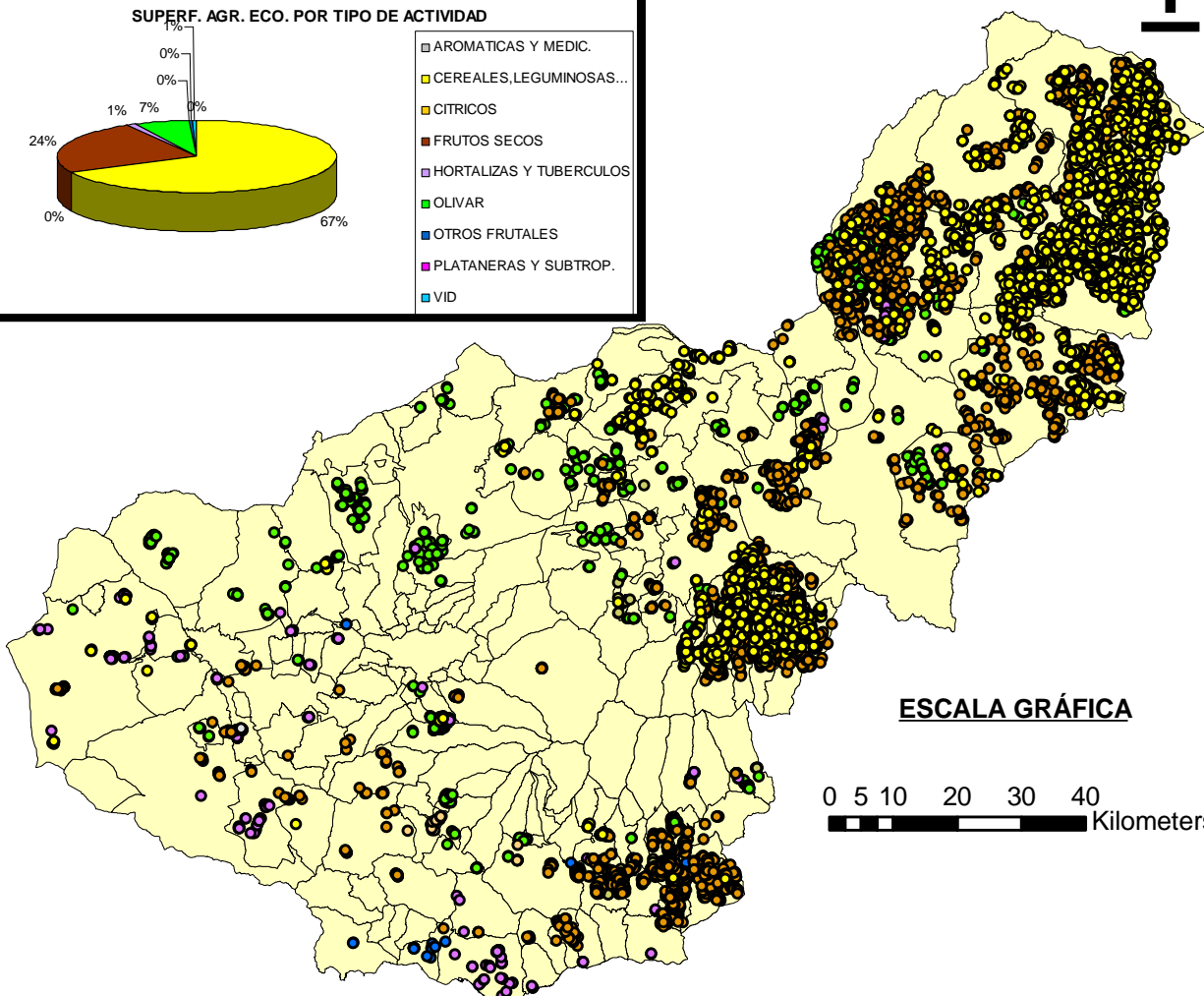
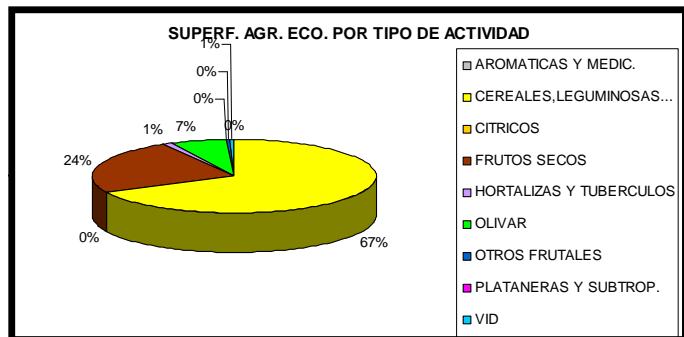


**RECINTOS POR GÉNERO 2007**

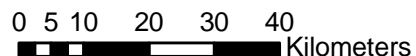


# PROVINCIA DE GRANADA

## RECINTOS AGRICOLAS ECOLÓGICOS 2007



**ESCALA GRÁFICA**

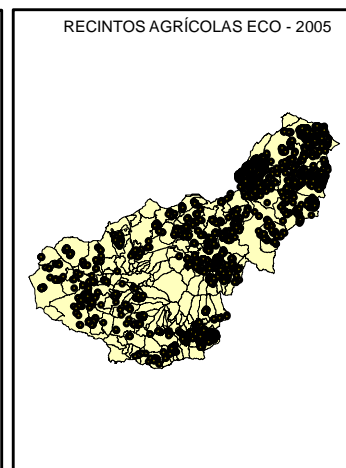
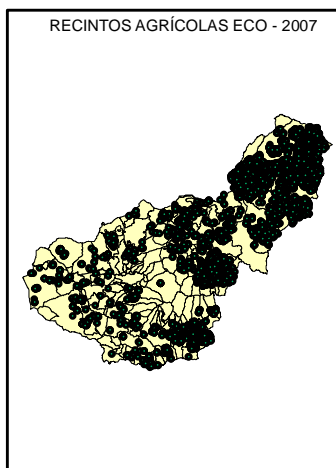


### LEYENDA

- AROMATICAS Y MEDICIONALES
- CEREALES LEGUMINOSAS Y OTROS
- CITRICOS
- FRUTOS SECOS
- HORTALIZAS Y TUBERCULOS
- OLIVAR
- OTROS FRUTALES
- PLATANERAS Y SUBTROPICALES
- VID

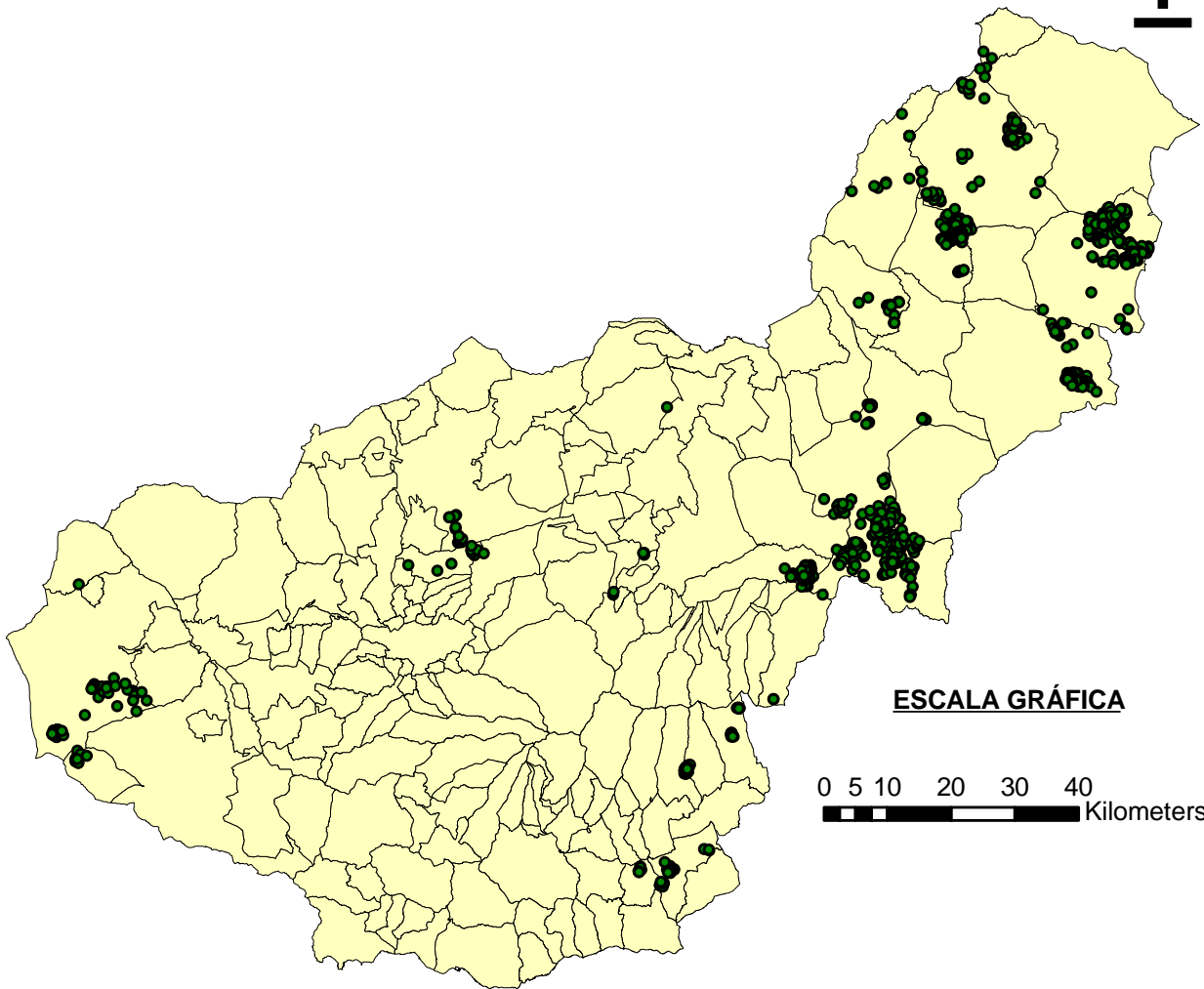
■ MUNICIPIOS GRANADA

### RECINTOS AGRÍCOLAS ECOLÓGICOS EVOLUCIÓN AÑOS 2005 Y 2007



# PROVINCIA DE GRANADA

## RECINTOS GANADEROS ECOLÓGICOS 2007



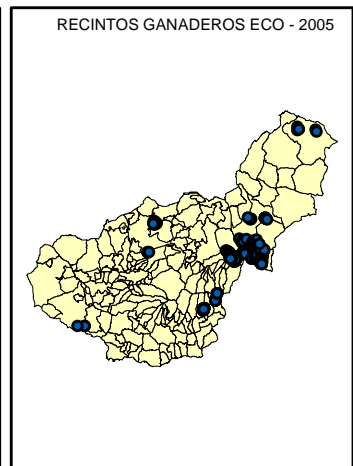
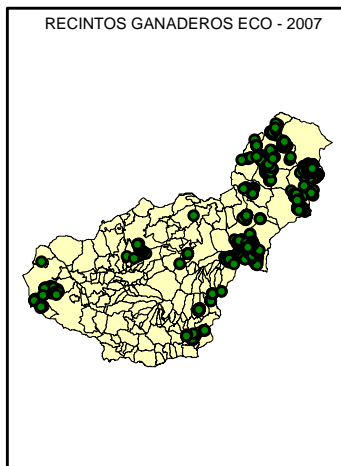
ESCALA GRÁFICA

0 5 10 20 30 40  
Kilometers

### RECINTOS GANADEROS ECOLÓGICOS EVOLUCIÓN AÑOS 2005 Y 2007

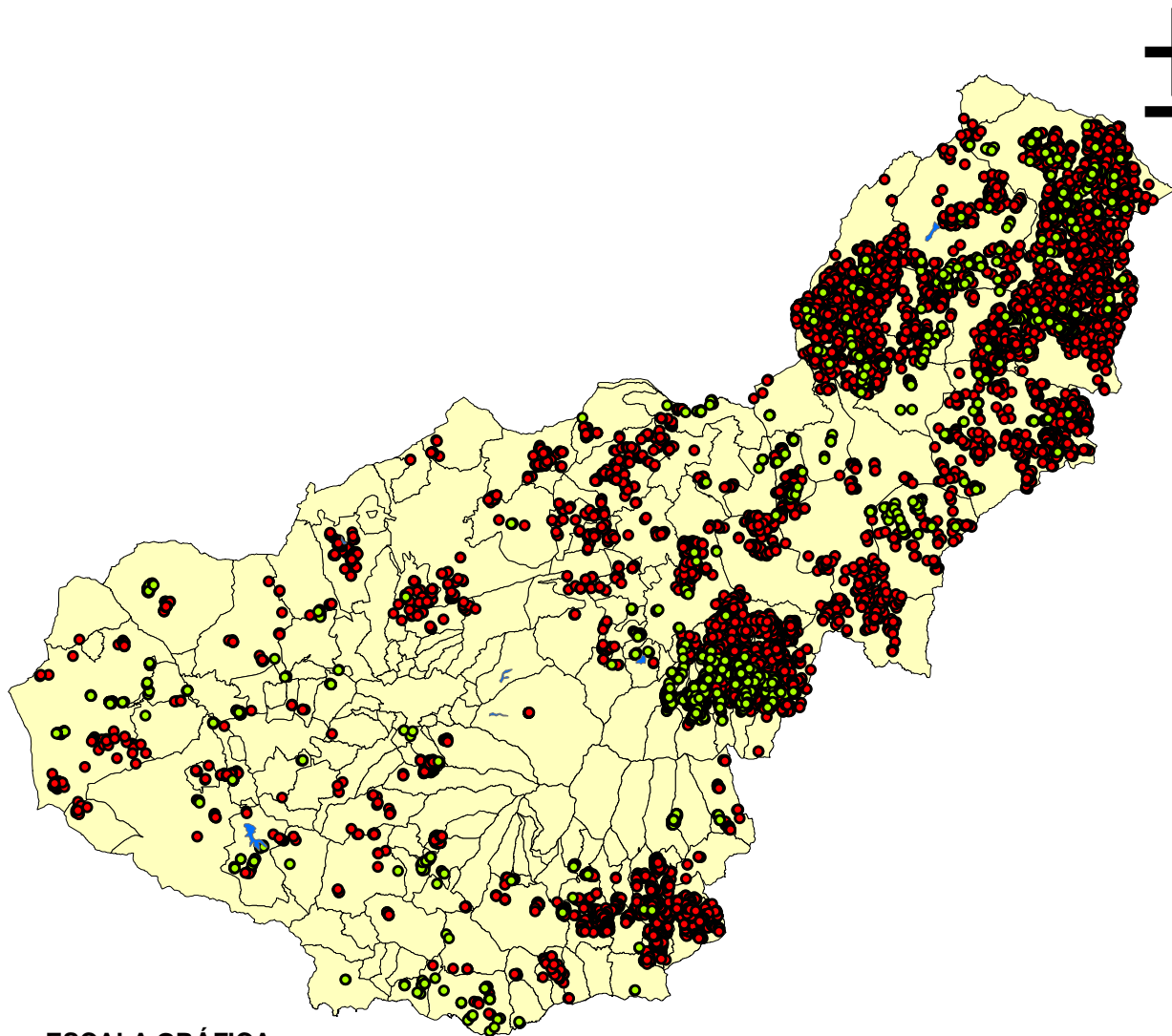
**LEYENDA**

- PASTOS PRADERAS Y FORRAJES
- MUNICIPIOS GRANADA



# PROVINCIA DE GRANADA

## RECINTOS POR USO (SECANO - REGADIO)



### ESCALA GRÁFICA

