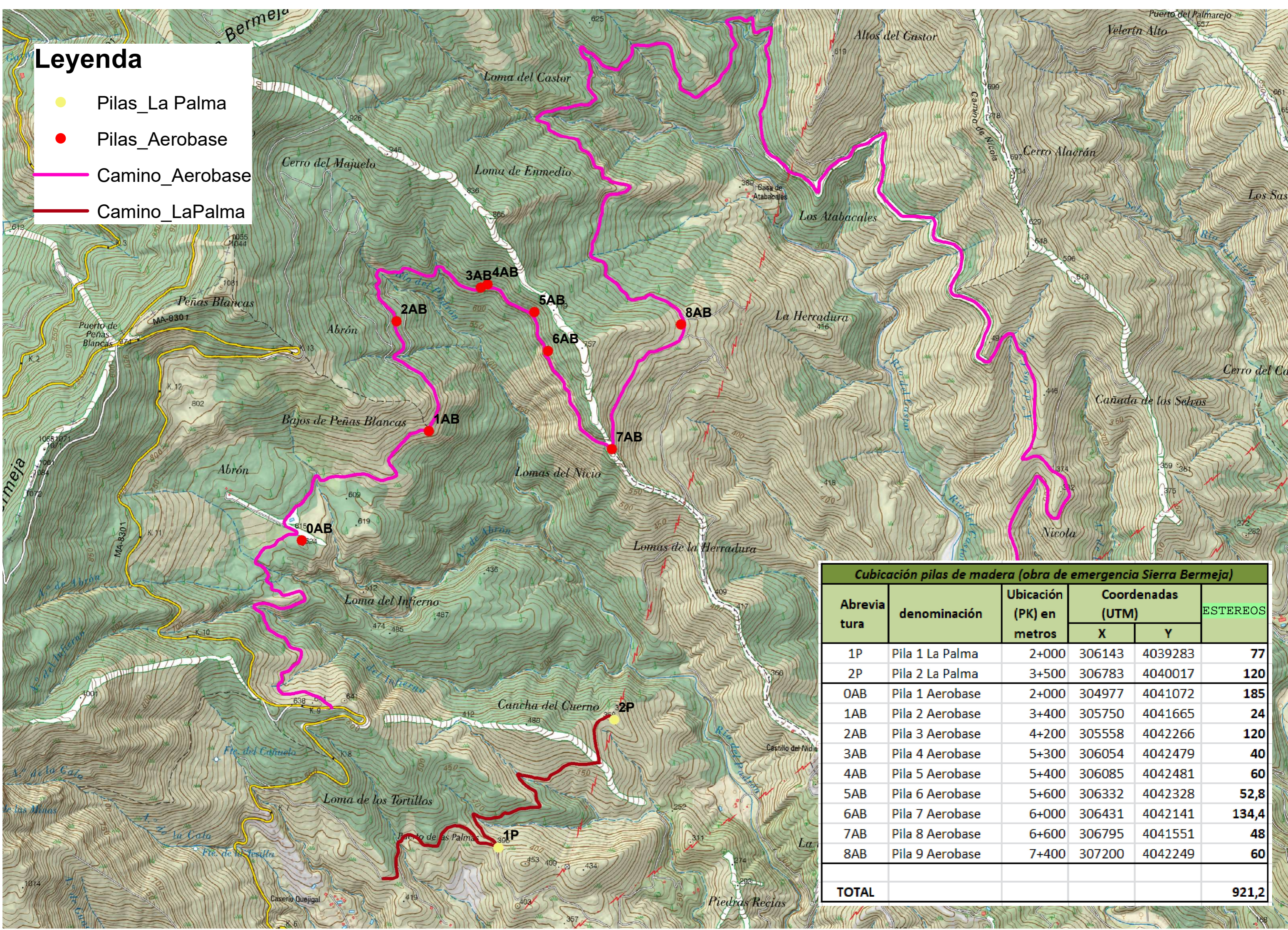


Leyenda

- Pilas_La Palma
- Pilas_Aerobase
- Camino_Aerobase
- Camino_LaPalma



| Cubicación pilas de madera (obra de emergencia Sierra Bermeja) | | | | | |
|--|-----------------|--------------------------|-------------------|---------|--------------|
| Abreviatura | denominación | Ubicación (PK) en metros | Coordenadas (UTM) | | ESTEREOS |
| | | | X | Y | |
| 1P | Pila 1 La Palma | 2+000 | 306143 | 4039283 | 77 |
| 2P | Pila 2 La Palma | 3+500 | 306783 | 4040017 | 120 |
| 0AB | Pila 1 Aerobase | 2+000 | 304977 | 4041072 | 185 |
| 1AB | Pila 2 Aerobase | 3+400 | 305750 | 4041665 | 24 |
| 2AB | Pila 3 Aerobase | 4+200 | 305558 | 4042266 | 120 |
| 3AB | Pila 4 Aerobase | 5+300 | 306054 | 4042479 | 40 |
| 4AB | Pila 5 Aerobase | 5+400 | 306085 | 4042481 | 60 |
| 5AB | Pila 6 Aerobase | 5+600 | 306332 | 4042328 | 52,8 |
| 6AB | Pila 7 Aerobase | 6+000 | 306431 | 4042141 | 134,4 |
| 7AB | Pila 8 Aerobase | 6+600 | 306795 | 4041551 | 48 |
| 8AB | Pila 9 Aerobase | 7+400 | 307200 | 4042249 | 60 |
| TOTAL | | | | | 921,2 |