

## BEST PRACTICES



Please refrain from making noise



Open camping is not permitted



Please dispose of rubbish in the bins provided



Capturing animals is not permitted



Walk along the marked trails



Fires are not permitted



Respect private property



Plant collecting is not permitted

Emergency phone: 112

CÁDIZ  
MÁLAGA

PARQUE NATURAL  
Sierra de Grazalema

© / Editing / Coordinación: Regional Ministry of Agriculture, the Environment and Rural Development Department of Sustainability, Environment and Blue Economy / Environment and Water Agency of Andalusia  
Production and photography: Environment and Water Agency of Andalusia

## MORE INFORMATION

El Bosque Visitors' Centre. Federico García Lorca nº 1.  
El Bosque. Cádiz. Tel. 956 70 97 33.

ventanadelvisitante



UNIÓN EUROPEA  
Fondo Europeo Agrícola de Desarrollo Rural



Junta de Andalucía  
Consejería de Sostenibilidad,  
Medio Ambiente y Economía Azul

PARQUE NATURAL  
Sierra de Grazalema

Trail

Cerro Coros



## OTHER CONSERVATION SCHEMES



### ROUTE

Circular

### LENGTH

3,2 km

### ESTIMATED TIME

1 hour and 30 minutes

### DIFFICULTY

Low

### TYPE OF TRAIL

Road or footpath

### LANDSCAPE / VEGETATION

Spanish fir trees, isolated holm oaks and Mediterranean scrubland with esparto undergrowth, broom trees and hawthorns. Agricultural landscape with livestock. Splendid panoramic views over the mountains.

### SHADE

Scant

### SPECIAL AUTHORISATION

Access permit is not required, although it is not permitted to leave the path as it is a particularly sensitive area due to the nesting of protected bird species.

### RECOMMENDATIONS

Carry drinking water, sun protection in the summer and wear suitable clothing and footwear. Please close the gates when passing through and keep dogs on a leash, as this is a public forest with livestock use.

### PROVINCE / MUNICIPALITIES

Cádiz / Grazalema

### SHEETS OF MTN MAP 1:50.000

1050

### START / END COORDINATES

36°47'16.14"N - 5°22'36.31"O

36°47'15.75"N - 5°22'35.87"O



### HOW TO GET THERE

At kilometre 46.1 on the A-372 road from Arcos to Grazalema, take the CA-9104 road to Zahara de la Sierra, and at kilometre 3.2, at Puerto de las Palomas, you will find the access to this trail.



### PARKING

The footpath has a parking area for approximately 10-12 cars.



### PUBLIC TRANSPORT

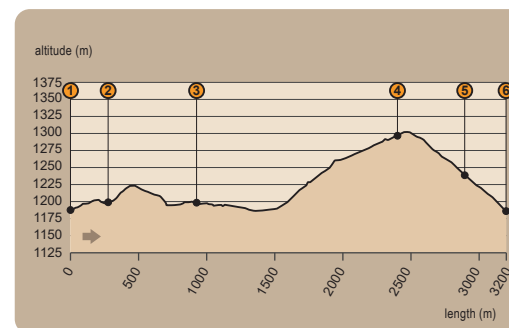
The main companies running regular bus routes in the area are Los Amarillos (tel. +34 902 21 03 17) and Transportes Generales Comas S.A. (tel. +34 902 19 92 08). The nearest train station is in Cortes de la Frontera (check services and timetables at [www.renfe.es](http://www.renfe.es) or tel. +34 902 24 02 02).



### OTHER TRAILS

Sierra de Grazalema Natural Park offers several trails to discover the park. Those closest include El Pinsapar Trail, Llanos de Rabel trail and El Torreón trail.

### PROFILE OF ROUTE



### MAXIMUM GRADIENT

117 m

### MAXIMUM ALTITUDE

1302 m

### MINIMUM ALTITUDE

1185 m



## THE REBIRTH OF MONTEPRIETO

In September 1992, a huge forest fire destroyed more than 800 hectares of Mediterranean forest in the public lands of Monte Prieto, belonging to the municipalities of Zahara de la Sierra and Grazalema. In addition to the environmental damage, five forest firefighters lost their lives fighting the fire to safeguard Andalusia's natural heritage, making this the most dramatic fire in the history of the INFOCA system.

As a tribute to the victims, the civil society of Cádiz got down to work to restore Monteprieto as soon as possible. With the support of local and regional authorities, thousands of volunteers were mobilised who, for more than a decade, helped the natural regeneration of the forest. Together with the forestry work carried out by the Regional Government of Andalusia (Junta de Andalucía), today, more than thirty years later, Monte Prieto has become a young and healthy holm oak forest and an example of successful social involvement and institutional collaboration to solve environmental problems which affect us all.





## Trail Cerro Coros

The Cerro Coros trail starts [1] in the vicinity of Puerto de las Palomas, at almost 1200 metres above sea level. It is located on the winding CA-9104 road between Grazalema and Zahara de la Sierra. It has a small parking area with magnificent panoramic views of Serrania de Ronda, Sierra del Endrinal and the southern area of the natural park, as well as interesting nearby natural features such as La Aguja and the vertical cliffs where a bustling colony of griffon vultures nests.

Cerro Coros is a circular trail which is rather easy to walk and enjoys spectacular views of the landscape. There are two paths starting from the car park. Follow the left one, which is narrower and has a small gate at the start. The first part of the path is surrounded by Spanish firs, sometimes dotted among the holm oaks and accompanied by junipers, forming frequent groves [2]. The mere observation of its conical shape, typical for fir trees, takes us to much more northern and colder environments, which are foreign to the Mediterranean. But it must not be forgotten that the Spanish fir is a relic of the Tertiary era coniferous forests when cooler temperatures than today prevailed in the Mediterranean. We should also bear in mind that in this area, at an altitude of over a thousand metres, winter snowfalls, although sporadic, are not uncommon. This is why this fir tree found refuge in these areas of the Sierra de Grazalema Natural Park, along with others in the Sierra de las Nieves and Sierra Bermeja in the province of Malaga.

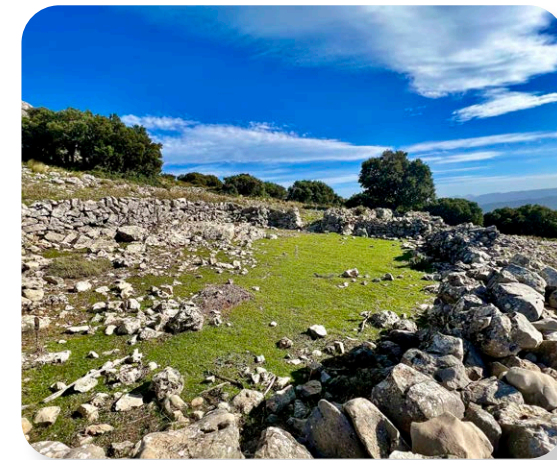


As you head north, the views towards the Zahara-El Gastor reservoir become more majestic [3]. This side of the reservoir's shore is flanked by the holm oak grove of Monte Prieto and the unmistakable silhouette of the Nasrid castle of Zahara de la Sierra, and on the back bank lies the impressive rock of Algarín on the right and the Sierra de Lijar on the left, home to the villages of El Gastor and Algodonales, respectively. The Spanish firs disappeared a while ago from the path, in their place you can now find small holm oaks, mistletoe-hosting hawthorns and a few specimens of the large scaup, an endemic species from Andalusia and North Africa, unmistakable for its trunk full of half-detached tree bark.

From here a continuous but not very challenging climb begins up to the eastern viewpoint of this hill with views towards the four points of the compass. The route back begins along the southeastern side of the Cerro Coros slope, and then along the same slope you came from, only higher up, closer to the summit and with less greenery. The path is flanked by a line of pebbles on the side of the slope so it remains useable. This indicates that it must have been a very busy path that was important to maintain in the past for the inhabitants of these areas.



The trail ascends to 1300 metres, 30 metres lower than the maximum altitude of Cerro Coros. It is important not to get too close to the cliffs as this is a major bird nesting area. From this point onwards, the holm oak scrubland practically becomes a pasture that is much appreciated by livestock [4] and wild herbivores. It is an open area ideal for observing large birds of prey such as the griffon vulture or the golden eagle, and smaller species like the blue rock thrush. The mountain goat also enjoys the heights and, if you are lucky you will see some of them along the final trail segment. At this point the path descends around highly weathered limestone formations and areas where the vegetation shows clear signs of grazing. The ruins of a sheepfold [5] show us the ancestral use of these lands for livestock farming, where a kind of chute can still be seen on the ground floor to facilitate milking tasks.

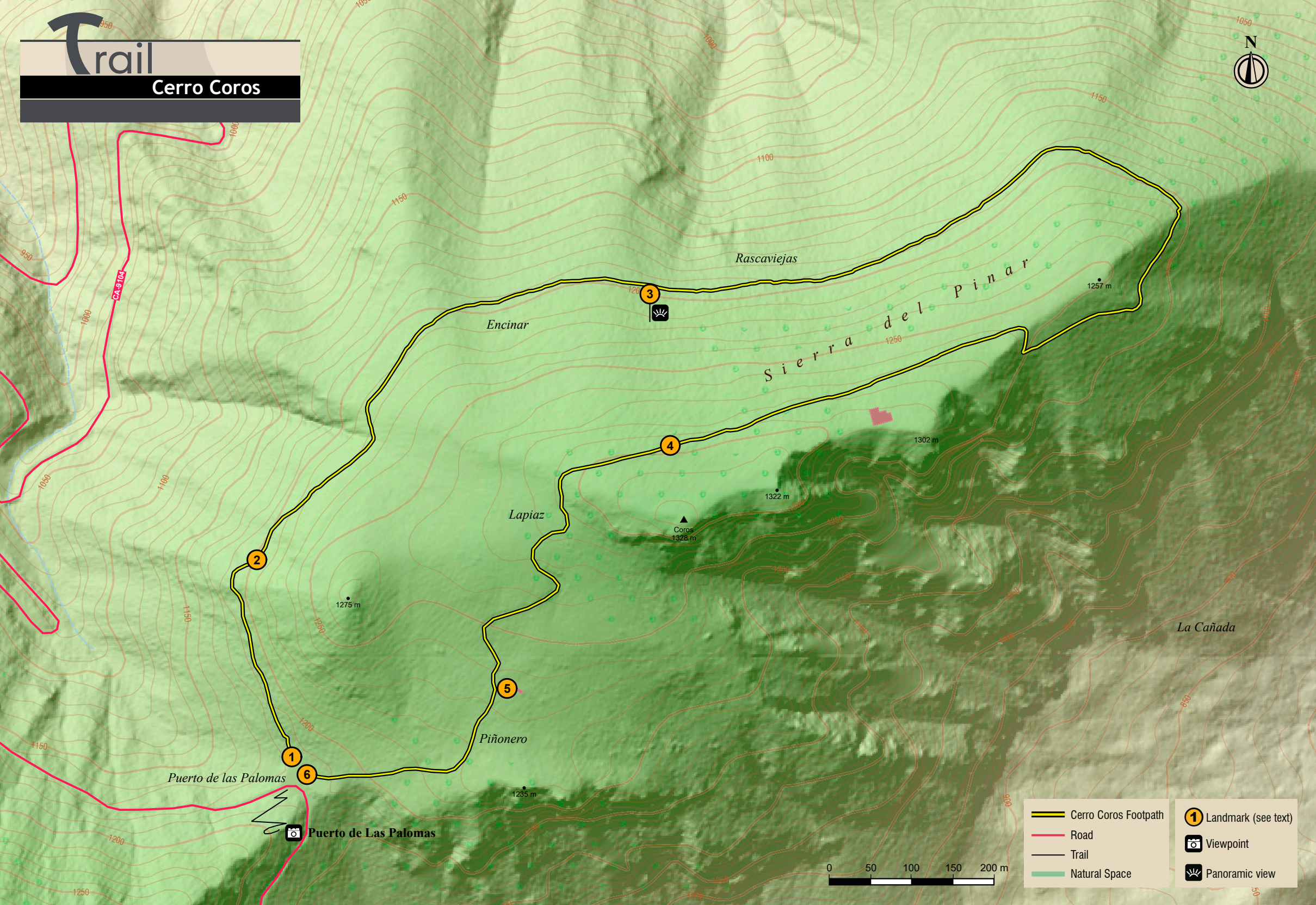


It is worth looking back and taking in the image of Cerro Coros in all its enormity before entering the reforested stone pine grove that will take you back to the car park [6]. If you haven't already done so, it is highly advisable to visit the Puerto de las Palomas viewpoint before setting off, its changing views never disappoint.



# Trail

## Cerro Coros



2

3

4

5

1

6

1 Landmark (see text)

Viewpoint

Panoramic view

- Cerro Coros Footpath
- Road
- Trail
- Natural Space

