

GOOD PRACTICE



- Please leave rubbish in the bins provided
- Walk on the marked paths
- Please respect private property



- The capture of animals is not permitted
- Starting fires is strictly forbidden
- Fishing is prohibited
- Plant collecting is not allowed

Emergency phone: 112



HUELVA

PARQUE NATURAL
Sierra de Aracena
y Picos de Aroche

MORE INFORMATION

Cabildo Viejo Visitors' Centre. Plaza Alta s/n. Edificio Cabildo Viejo. Aracena. Huelva. Tel.959 12 95 53/4.

ventanadelvisitante.



UNIÓN EUROPEA
Fondo Europeo Agrícola de Desarrollo Rural



Junta de Andalucía
Consejería de Agricultura, Ganadería,
Pesca y Desarrollo Sostenible

HUELVA

PARQUE NATURAL
Sierra de Aracena
y Picos de Aroche

Trail

Aracena
Corteconcepción



OTHER CATEGORIES OF PROTECTION



NATURA 2000



Organización
de las Naciones Unidas
para la Educación,
la Ciencia y la Cultura

Red
Española de
Reservas de
la Biosfera

• ROUTE

Linear walk

• LENGTH (OUTWARD)

4,4 km

• ESTIMATED TIME (OUTWARD)

2 hours

• DIFFICULTY

Low

• TYPE OF TRAIL

Path or track

• LANDSCAPE / VEGETATION

Typical hilly landscape with moderate slopes. Open fields with *dehesas*, olive groves and Mediterranean forest. Extensive cattle breeding of cattle, sheep and pork (at the *montanera* feeding state, that is, letting the pigs feed on acorns just before being slaughtered). Small agricultural holdings. Footpaths typically lined by stone walls. White villages.

• SHADE

Frequent

• SPECIAL AUTHORISATION

Not required

• RECOMMENDATIONS

Carry drinking water and wear suitable clothing and footwear. Check that the water from fountains is safe to drink

• PROVINCE / MUNICIPALITIES

Huelva / Aracena y Corteconcepción

• SHEETS OF MTN MAP 1:50.000

917 - Aracena ; 918 - Santa Olalla de Cala

• START / END COORDINATES

37° 53' 57,88"N – 6° 33' 14,64"O

37° 53' 49,89"N – 6° 30' 40,02"O



HOW TO GET THERE

The main road to Aracena is N-433 (Seville-Lisbon). From that point, take the HU-8126 in the direction to Carboneras and Cañaveral de León. About 500 metres to your left the Camino Fuente del Rey branches off, which is where the trail starts.



PARKING

There is a car park with some 5 places at the start of the trail and another one with some 20 places more 500 metres away, in the direction of Aracena.



PUBLIC TRANSPORT

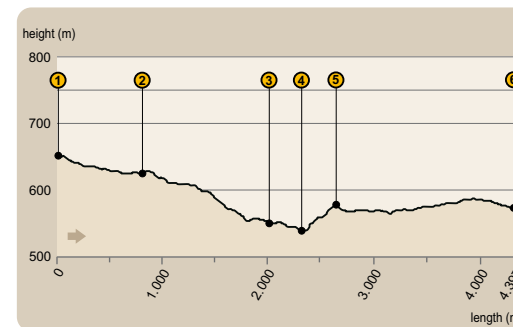
The main companies running regular bus routes in the area are Casal (tel. 954 99 92 90; www.autocaresbernardo.com) and Damas (tel. 959 25 69 00 ; www.damas-sa.es).



OTHER TRAILS

The natural park has an extensive offering of marked trails. The closest trails are two that begin in Aracena, in the direction of Fuenteheridos and Linares de la Sierra.

PROFILE OF ROUTE



• MAXIMUM GRADIENT

114 m

• MAXIMUM HEIGHT

652 m

• MINIMUM HEIGHT

538 m

VEGETABLE GARDENS

Vegetable gardens have been of great importance in the subsistence and economy of many towns and villages in Sierra Morena. They are usually located

around the town, and are irrigated with the water of fountains, springs, rivers, streams and wells. The ongoing crisis of traditional productive models over the last decades has not favoured the maintenance of a type of agriculture which had remained virtually unchanged for centuries, and for this reason you will see a large number of abandoned or untended gardens.



In the past, vegetables grown in those gardens complemented a local diet fundamentally based on animal products. However, fruit from orchards was carried on the back of a mule to the markets of the main cities, where the area's delicious quinces, pears, walnuts or chestnuts sold quickly. Delicate fruits such as sour cherries and grapes were used to make cordials, which were a robust local industry.





Aracena Corteconcepción

Aracena

In Aracena, look for the local road that leads to Carboneras y Cañaveral de León (HU-8126) and branches off the N-433 road in front of the San Roque shrine, to the north-east. About five hundred metres on, the Fuente del Rey footpath branches off to the right, and this is where the trail starts (see [1] in the map). The vegetation includes Portuguese oaks and a dense undergrowth with turpentine trees, strawberry trees, common broom and other species. Sunny spots are dominated by rockroses, wild lavender and narrow-leaved mock privet. Shortly after, you will find a fountain [2] whose existence partly explains the abundance of vegetable gardens in the area, which until not long ago



The Sierra de Aracena has a dense network of roads and paths, a consequence of a more distributed settlement pattern with respect to the rest of Sierra Morena. Many



are traditionally built footpaths in harmony with the landscapes they connect. These traditional footpaths are usually lined by masonry walls, their most prominent sign of identity.

were a cornerstone in the economy of the area.

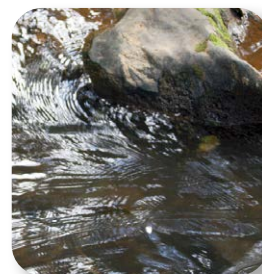
Fuente del Rey

Keep walking along the main path in the same direction, ignoring the paths that branch off left and right. This main path runs along the Fuente del Rey stream, getting gradually closer to it. With an appropriate flow, you will notice an increasing rumour of water; this is caused by a small waterfall [3] certainly worth a visit.



The Fuente del Rey stream is a tributary of the Rivera de Huelva river, which, after a short section, is discharged in the Aracena reservoir. Therefore, the waters of this stream contribute to provide drinking water to Seville and its metropolitan area. The geology and climate of the area allow to take the water to be used elsewhere, but some if it remains in the area, for example to for irrigating the vegetable gardens.

The trail continues along the water stream, which is lined by a riverside forest of black poplars and eucalyptus, in which some poplar specimens are up to 20 metres tall. A little further down the road, you will use the stepping stones to cross the stream [4].



Corteconcepción

Behind the walls that line the path, there is a holm oak wood with a dense undergrowth, which extends up a hill [5] from which the Aracena reservoir, about four kilometres to the north-east, can be seen. This large reservoir is part of the water supply system of the metropolitan area of Seville.



The trail continues gently up among chestnut trees, in the next section, and later, as it comes to its end near Corteconcepción [6], among olive groves.



Corteconcepción is, in fact, formed by two neighbouring villages: La Corte and Puerto Gil. Although this town does not boast a wide monumental heritage, it has preserved the traditional houses representative of the area, and this has earned it the designation of Historical complex in the Catalogue of Historical Heritage of Andalusia Its cold cuts industry is especially noteworthy, even in a place in which it is not particularly easy to develop such an industry, with ham as its flagship product,

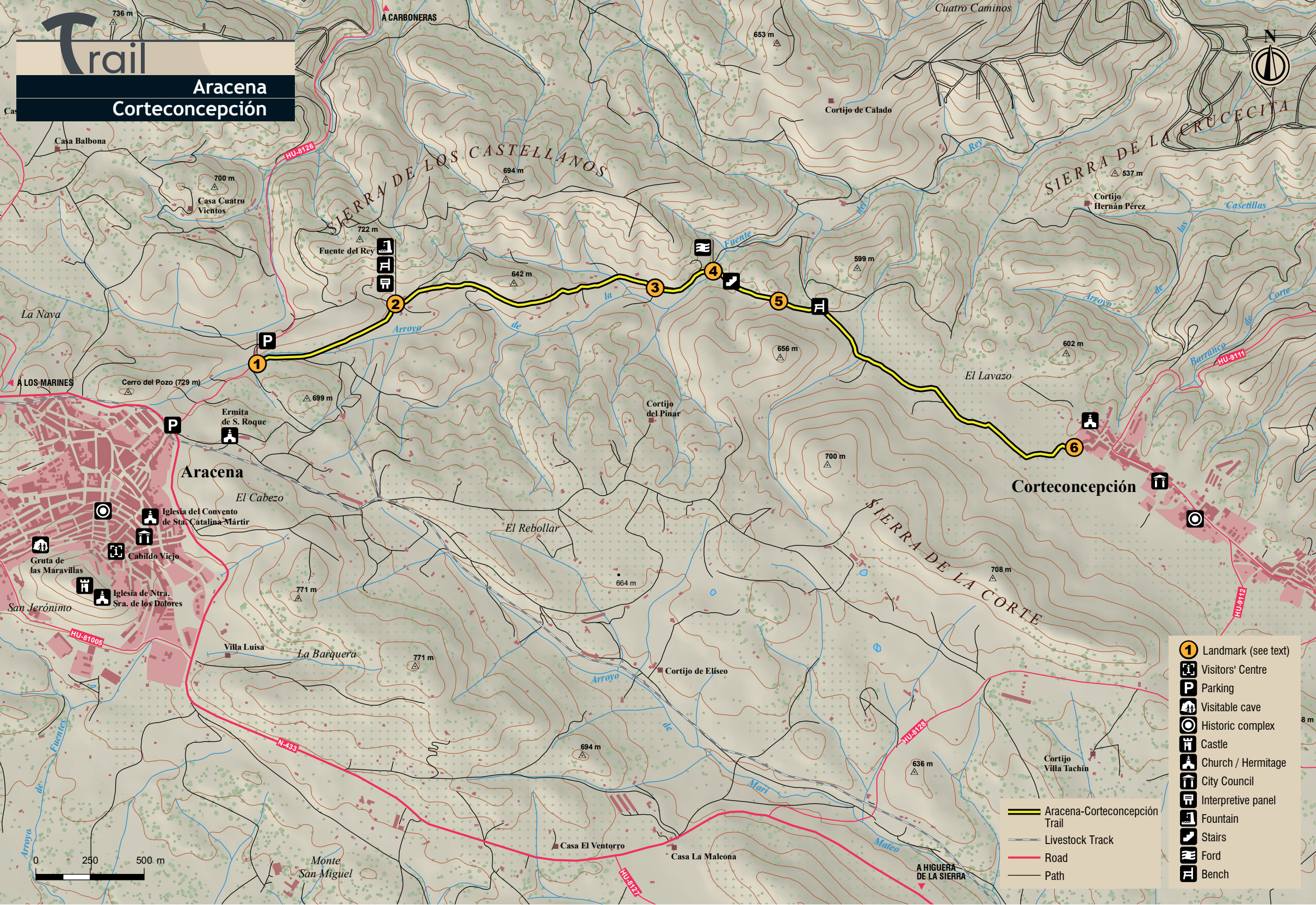


One of the main attractions of hiking in this Natural Parks is the fact that the original paths, built in the traditional way, remain. They can be identified by their pebble paved surfaces and, above all, by the dry masonry walls that line them and which are the home of a large number of animals and plants.

This path is also an opportunity to admire these constructions, as well as irrigation channels built to irrigate the small and medium vegetable gardens, and similar constructions.

Trail

Aracena Corteconcepción



- 1** Landmark (see text)
- Visitors' Centre
- P** Parking
- Visitable cave
- Historic complex
- Castle
- Church / Hermitage
- City Council
- Interpretive panel
- Fountain
- Stairs
- Ford
- Bench

- Aracena-Corteconcepción Trail
- Livestock Track
- Road
- Path

