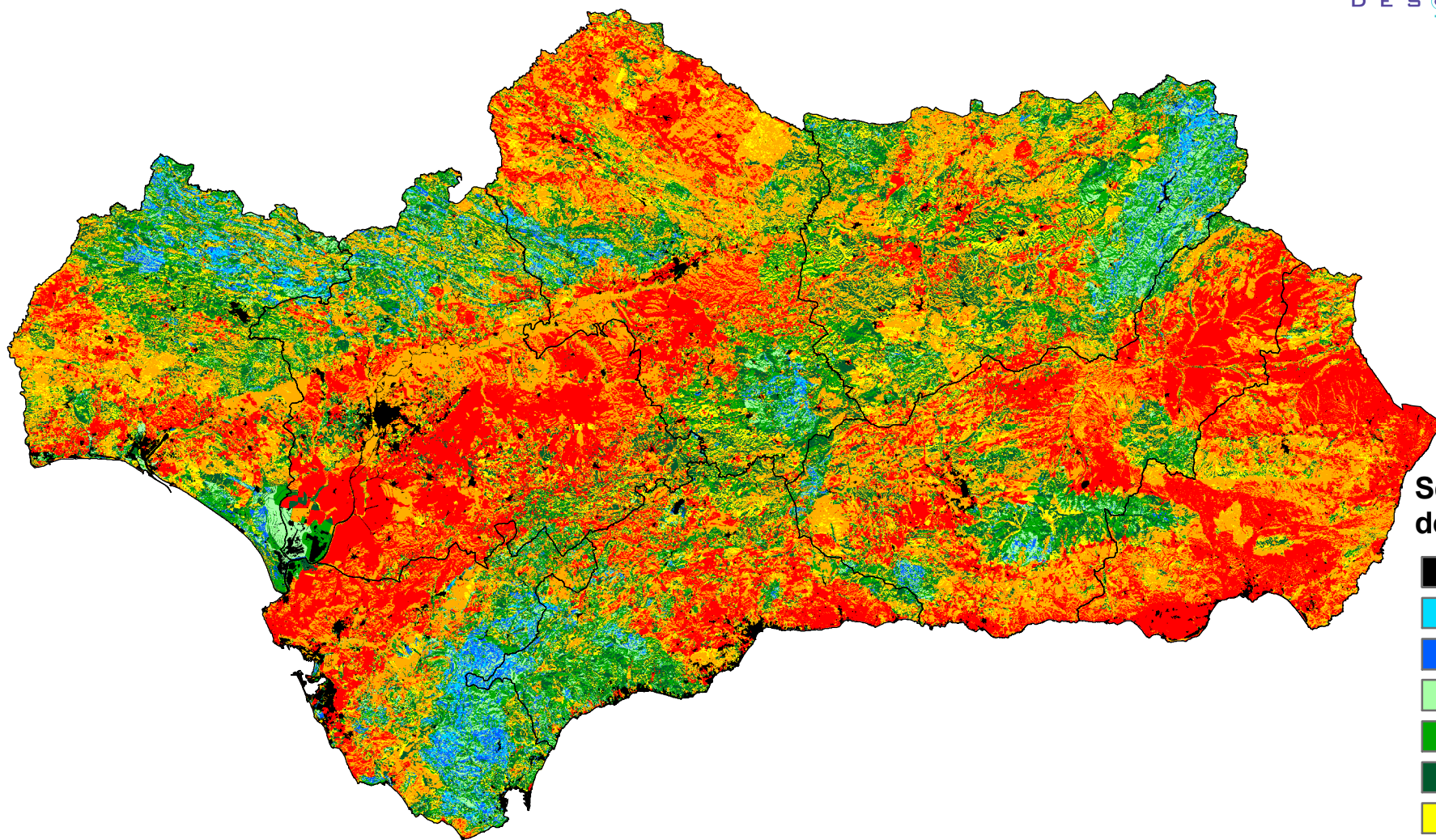



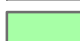







SENSIBILIDAD A LA DESERTIFICACIÓN (MEDALUS)

Año de referencia 1956



Sensibilidad a la desertificación

-  No evaluado
-  No sensibles (N)
-  Potenciales (P)
-  Frágiles (F1)
-  Frágiles (F2)
-  Frágiles (F3)
-  Críticas (C1)
-  Críticas (C2)
-  Críticas (C3)

