

**Email:** [ukneqas@immqas.org.uk](mailto:ukneqas@immqas.org.uk)

**Web Address:** <https://www.immqas.org.uk>

### UK NEQAS for ACETYLCHOLINE RECEPTOR ANTIBODY

**Distribution : 183**

**July 2018**

**Participant : 94317**

94 out of 121 participants returned data for this distribution. 78% response rate.


#### Nil Responses

10702, 12219, 12221, 14232, 14558, 14573, 14587, 14599, 14888, 91454, 92952, 93367, 93580, 95406, NOKLUS, YVSOLAB, ORG\_G, ORG\_A, ORG, BIOG, INFO, CODEX, TVN, SEQC, TVNR, VAR, DEKS

**183-1** was a sample from a patient with Myasthenia Gravis.

**183-2** was a single donor normal human serum.

**183-3** was a single donor normal human serum.

Sample	Designated Response	Your Response	Score	OMIS
183-1	Positive	Positive	0	0
183-2	Negative	Negative	0	0
183-3	Negative	Positive	1	1
			<b>Total MIS</b>	1 

The current window of analysis comprises the previous four distributions




#### Comments

The Total Misclassification scoring (**MIS**) system for the **qualitative** element of the scheme gives an indication of the number of instances where a laboratory's response is at variance with that defined for each specimen in a window of **four** distributions.

A panel of reference laboratories (10656, 10693, 10745, 11767, 14239) were in agreement in providing the target responses.

Laboratories have been given misclassification score (MIS) for each sample where they are at variance with the target response as determined by the Reference Panel. The overall misclassification score (OMIS) now includes a running window of 12 samples over 12 months.

The categories of performance are:

	<b>Total MIS</b>
 <b>Good</b>	Zero
 <b>Adequate</b>	1-2
 <b>Poor</b>	> 2

For further performance criteria information please see our website at <http://www.immqas.org.uk>.

If laboratories require further assistance please contact the centre.

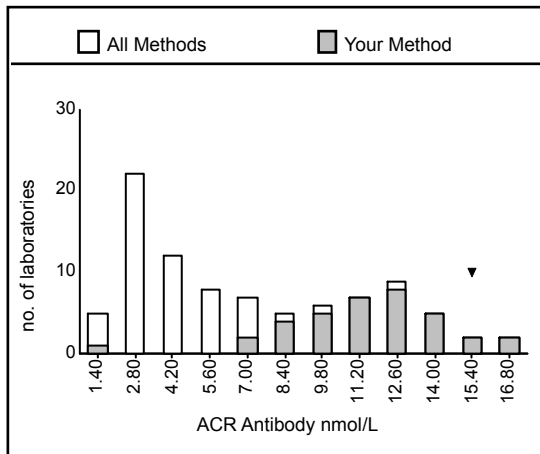
ACR Antibody (nmol/L) - 183-1

Your Results

ACR Antibody: Positive  
 Quantitation: 15.1  
 Unit: nmol/L  
 Method: ELISA RSR

	Returns	Positive	Negative	Mean	Range
<b>Units: nmol/L</b>					
<b>All Methods</b>	<b>92</b>	<b>91</b>	<b>1</b>	<b>6.2</b>	<b>0.0 - 15.1</b>
ELISA RSR	38	38	0	11.0	6.3 - 16.8
Euroimmun ELISA	9	9	0	1.5	1.3 - 1.9
In house RIA	1	1	0	2.1	2.1 - 2.1
RIA CIS Bio International	1	1	0	4.7	4.7 - 4.7
RIA DLD cell line	2	2	0	7.1	7.0 - 7.3
RIA IBL	23	22	1	2.5	1.5 - 4.1
RIA RSR	18	18	0	4.8	1.8 - 8.6

Please note: The statistical figures in the table above are trimmed



Your Method: ELISA RSR  
 Your Result: 15.1

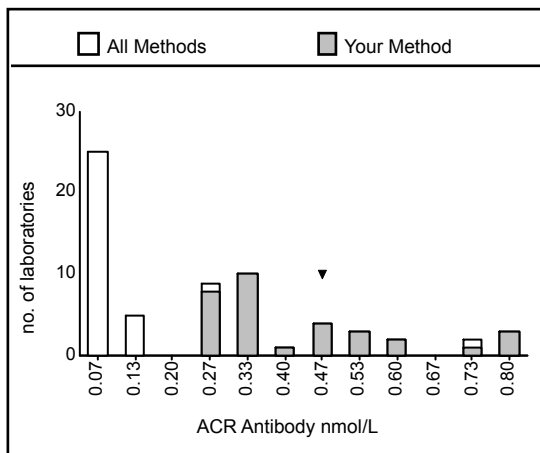
ACR Antibody (nmol/L) - 183-2

Your Results

ACR Antibody: Negative  
 Quantitation: 0.42  
 Unit: nmol/L  
 Method: ELISA RSR

	Returns	Positive	Negative	Mean	Range
<b>Units: nmol/L</b>					
<b>All Methods</b>	<b>93</b>	<b>3</b>	<b>90</b>	<b>0.2</b>	<b>0.0 - 0.7</b>
ELISA RSR	38	3	35	0.4	0.2 - 0.8
Euroimmun ELISA	9	0	9	0.1	0.0 - 0.3
In house RIA	1	0	1	0.0	0.0 - 0.0
RIA CIS Bio International	1	0	1	0.0	0.0 - 0.0
RIA DLD cell line	3	0	3	0.0	0.0 - 0.0
RIA IBL	23	0	23	0.0	0.0 - 0.1
RIA RSR	18	0	18	0.0	0.0 - 0.1

Please note: The statistical figures in the table above are trimmed



Your Method: ELISA RSR  
 Your Result: 0.42

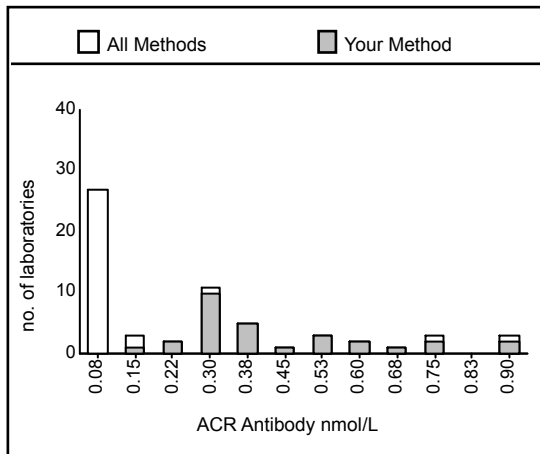
ACR Antibody (nmol/L) - 183-3

Your Results

ACR Antibody: Positive  
 Quantitation: 0.45  
 Unit: nmol/L  
 Method: ELISA RSR

	Returns	Positive	Negative	Mean	Range
<b>Units: nmol/L</b>					
<b>All Methods</b>	<b>93</b>	<b>5</b>	<b>88</b>	<b>0.2</b>	<b>0.0 - 0.9</b>
ELISA RSR	38	4	34	0.4	0.1 - 0.9
Euroimmun ELISA	9	0	9	0.1	0.0 - 0.3
In house RIA	1	0	1	0.0	0.0 - 0.0
RIA CIS Bio International	1	0	1	0.0	0.0 - 0.0
RIA DLD cell line	3	0	3	0.0	0.0 - 0.0
RIA IBL	23	1	22	0.1	0.0 - 0.7
RIA RSR	18	0	18	0.0	0.0 - 0.1

Please note: The statistical figures in the table above are trimmed



Your Method: ELISA RSR  
 Your Result: 0.45