

Email: ukneqas@immqas.org.uk

Web Address: <https://www.immqas.org.uk>

UK NEQAS for ACETYLCHOLINE RECEPTOR ANTIBODY

Distribution : 184

September 2018


Participant : 94317

98 out of 122 participants returned data for this distribution. 80% response rate.

Nil Responses

10702, 11906, 12108, 12219, 14012, 14391, 14558, 14888, 90621A, 91780, 93580, NOKLUS, YVSOLAB, ORG_G, ORG_A, ORG, BIOG, INFO, CODEX, TVN, SEQC, TVNR, VAR, DEKS

- 184-1** was a single donor normal human serum.
- 184-2** was a sample from a patient with Myasthenia Gravis.
- 184-3** was a sample from a patient with Myasthenia Gravis.

Sample	Designated Response	Your Response	Score	OMIS
184-1	Negative	Negative	0	0
184-2	Positive	Positive	0	0
184-3	Positive	Positive	0	1
			Total MIS	1 

The current window of analysis comprises the previous four distributions

Comments

Director Prof W Egner / Mrs D Patel, Operations Manager Mr D Gill / Dr H Wilkinson

Telephone 0114 271 5715, Fax 0114 226 6754




Sheffield Teaching Hospitals 
NHS Foundation Trust

The Total Misclassification scoring (**MIS**) system for the **qualitative** element of the scheme gives an indication of the number of instances where a laboratory's response is at variance with that defined for each specimen in a window of **four** distributions.

A panel of reference laboratories (10656, 10693, 10745, 11767, 14239) were in agreement in providing the target responses.

Laboratories have been given misclassification score (MIS) for each sample where they are at variance with the target response as determined by the Reference Panel. The overall misclassification score (OMIS) now includes a running window of 12 samples over 12 months.

The categories of performance are:

	Total MIS
 Good	Zero
 Adequate	1-2
 Poor	> 2

For further performance criteria information please see our website at <http://www.immqas.org.uk>.

If laboratories require further assistance please contact the centre.

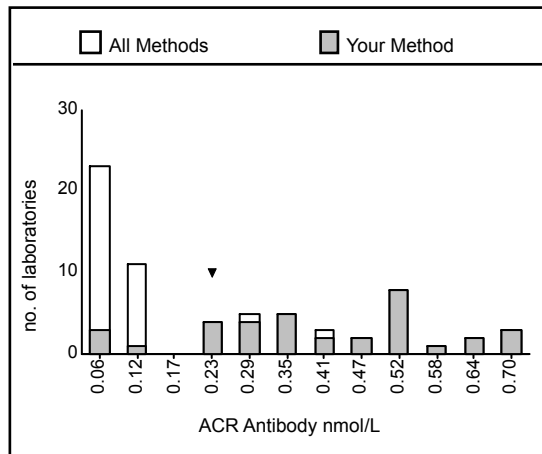
ACR Antibody (nmol/L) - 184-1

Your Results

ACR Antibody: Negative
 Quantitation: 0.23
 Unit: nmol/L
 Method: ELISA RSR

	Returns	Positive	Negative	Mean	Range
Units: nmol/L					
All Methods	97	2	95	0.2	0.0 - 0.7
ELISA RSR	40	2	38	0.4	0.0 - 0.7
Euroimmun ELISA	10	0	10	0.1	0.0 - 0.1
In house RIA	1	0	1	0.0	0.0 - 0.0
Medipan	1	0	1	0.4	0.4 - 0.4
RIA CIS Bio International	1	0	1	0.0	0.0 - 0.0
RIA DLD cell line	2	0	2	0.0	0.0 - 0.0
RIA IBL	24	0	24	0.0	0.0 - 0.1
RIA RSR	18	0	18	0.0	0.0 - 0.1

Please note: The statistical figures in the table above are trimmed



Your Method: ELISA RSR
 Your Result: 0.23

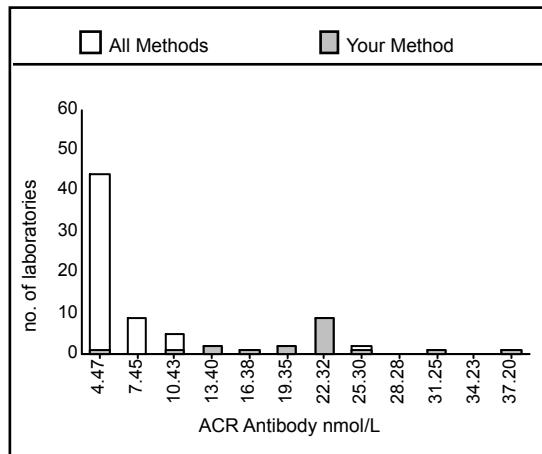
ACR Antibody (nmol/L) - 184-2

Your Results

ACR Antibody: Positive
 Quantitation: >20
 Unit: nmol/L
 Method: ELISA RSR

	Returns	Positive	Negative	Mean	Range
Units: nmol/L					
All Methods	98	98	0	7.3	1.5 - 22.9
ELISA RSR	41	41	0	19.2	4.0 - 37.2
Euroimmun ELISA	10	10	0	3.2	2.4 - 4.0
In house RIA	1	1	0	2.2	2.2 - 2.2
Medipan	1	1	0	22.9	22.9 - 22.9
RIA CIS Bio International	1	1	0	6.8	6.8 - 6.8
RIA DLD cell line	2	2	0	5.7	2.7 - 8.6
RIA IBL	24	24	0	2.9	1.5 - 4.5
RIA RSR	18	18	0	4.8	2.3 - 7.6

Please note: The statistical figures in the table above are trimmed



Your Method: ELISA RSR
 Your Result: >20

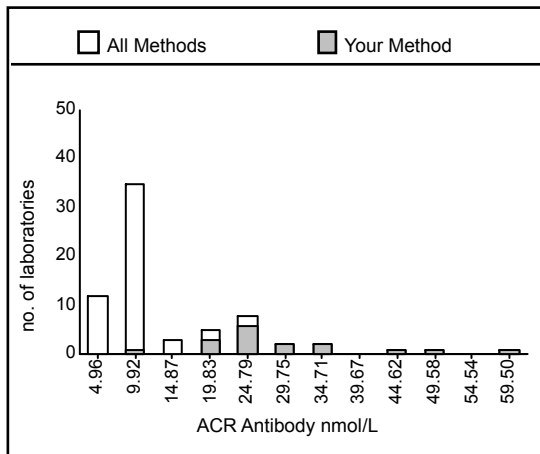
ACR Antibody (nmol/L) - 184-3

Your Results

ACR Antibody: Positive
 Quantitation: >20
 Unit: nmol/L
 Method: ELISA RSR

	Returns	Positive	Negative	Mean	Range
Units: nmol/L					
All Methods	98	98	0	10.6	0.9 - 31.9
ELISA RSR	41	41	0	27.2	9.8 - 59.5
Euroimmun ELISA	10	10	0	6.0	5.1 - 7.1
In house RIA	1	1	0	5.6	5.6 - 5.6
Medipan	1	1	0	24.2	24.2 - 24.2
RIA CIS Bio International	1	1	0	0.0	0.0 - 0.0
RIA DLD cell line	2	2	0	9.7	6.0 - 13.3
RIA IBL	24	24	0	5.6	0.9 - 9.8
RIA RSR	18	18	0	9.2	3.2 - 17.0

Please note: The statistical figures in the table above are trimmed



Your Method: ELISA RSR
 Your Result: >20