

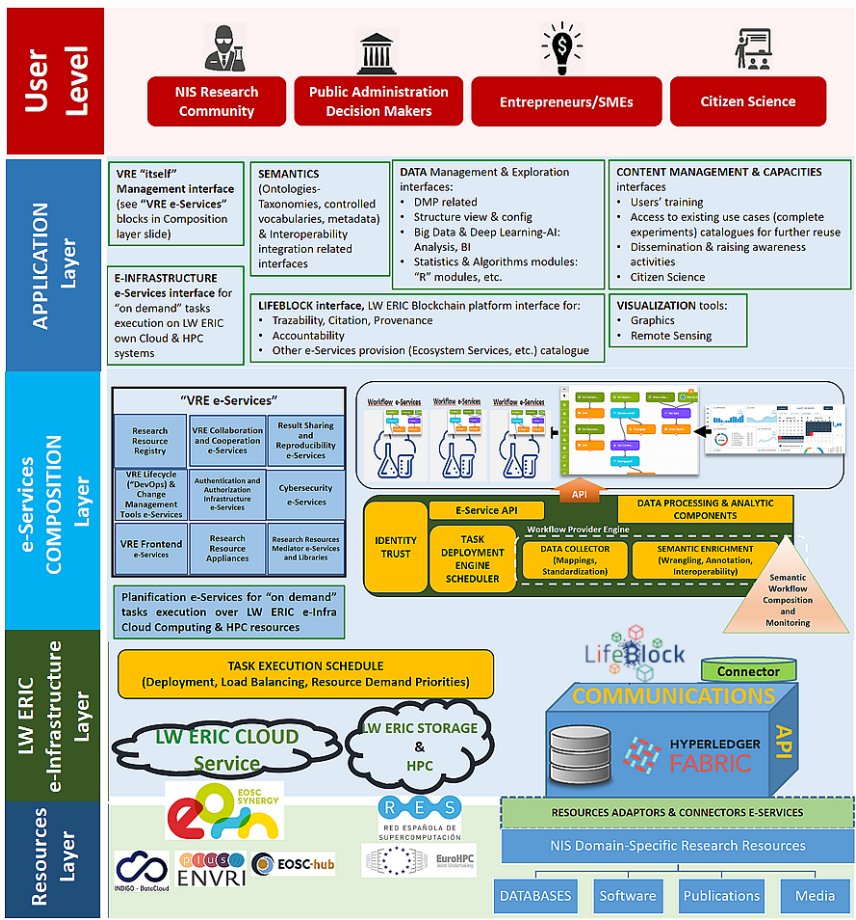


Lifewatch ERIC al servicio de los diferentes stakeholders

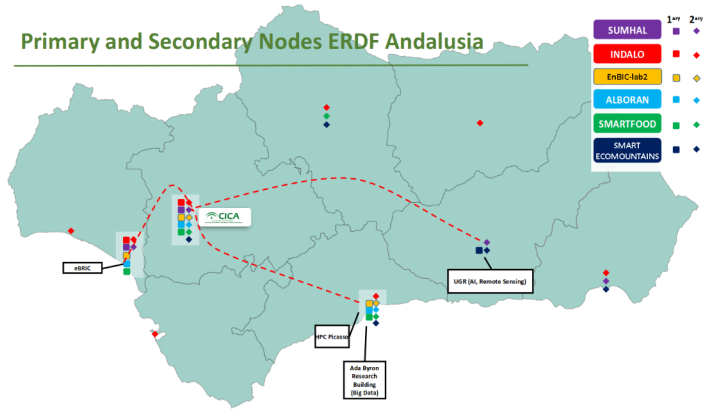
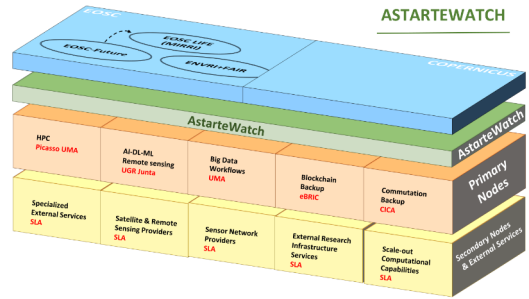
Proyecto INDALO: Conocimiento al servicio de la gestión Ambiental

Confederación de Empresarios de Andalucía. 26/09/2023

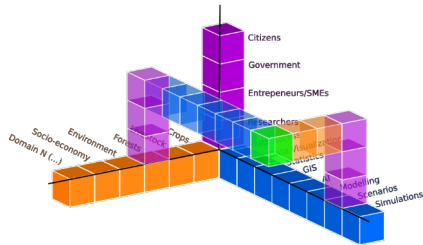




Red distribuida, de gestión integrada de servicios avanzados, orientados a la e-ciencia



Proceso de construcción ágil e interdisciplinar



Workflow	Template	Backlog
Workflow 1	Workflow 2	Workflow 3
Workflow 4	Workflow 5	Workflow 6

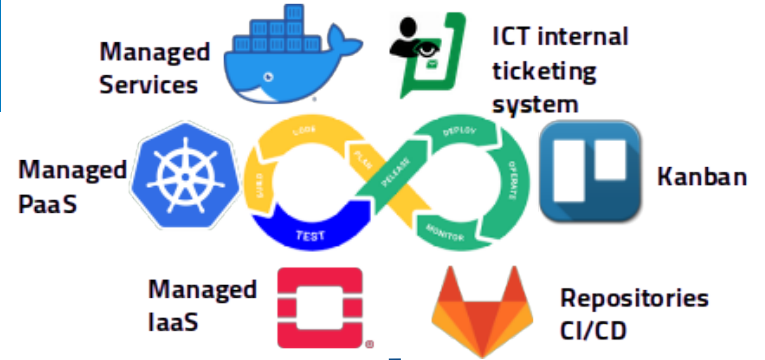
Deployment Stages	Stage 1 (Definition)	Stage 2 (Deployment Frontend)	Stage 3 (Packaging)	Stage 4 (Promoting services)	Stage 5 (Fully semantic pipeline)	Deployment
Deployment Stages 1	Deployment Stages 2	Deployment Stages 3	Deployment Stages 4	Deployment Stages 5	Deployment Stages 6	Deployment Stages 7

Workflow Stages	WORK	TESTING	CODE	RELEASED
Workflow Stages 1	Workflow Stages 2	Workflow Stages 3	Workflow Stages 4	Workflow Stages 5

Backlog	Stage 1 (Definition)	Stage 2 (Deployment Frontend)	Stage 3 (Packaging)	Stage 4 (Promoting services)	Stage 5 (Fully semantic pipeline)
Backlog 1	Backlog 2	Backlog 3	Backlog 4	Backlog 5	Backlog 6
Backlog 7	Backlog 8	Backlog 9	Backlog 10	Backlog 11	Backlog 12



Scientific-domain validated workflows



Mesa Técnica de Servicios Ecosistémicos (SSEE). Valorizando el Capital Natural



Trabajando para la confección de una metodología para la integración de las mejores prácticas de:

- A) Gestión medio natural,
- B) Aprovechamiento económico y
- C) Gobernanza

Para la puesta en valor de SSEE esenciales



Junta de Andalucía
Consejería de Sostenibilidad,
Medio Ambiente y Economía Azul



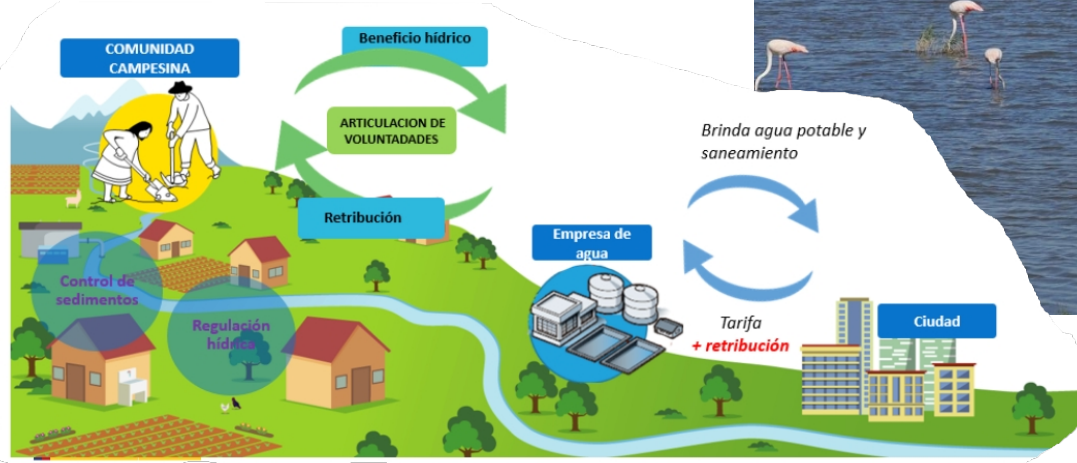
VRE's para:

A) sumideros de CO2 en marismas (**Carbono Azul**) para fomentar la competitividad de empresas andaluzas y la **Economía Azul**

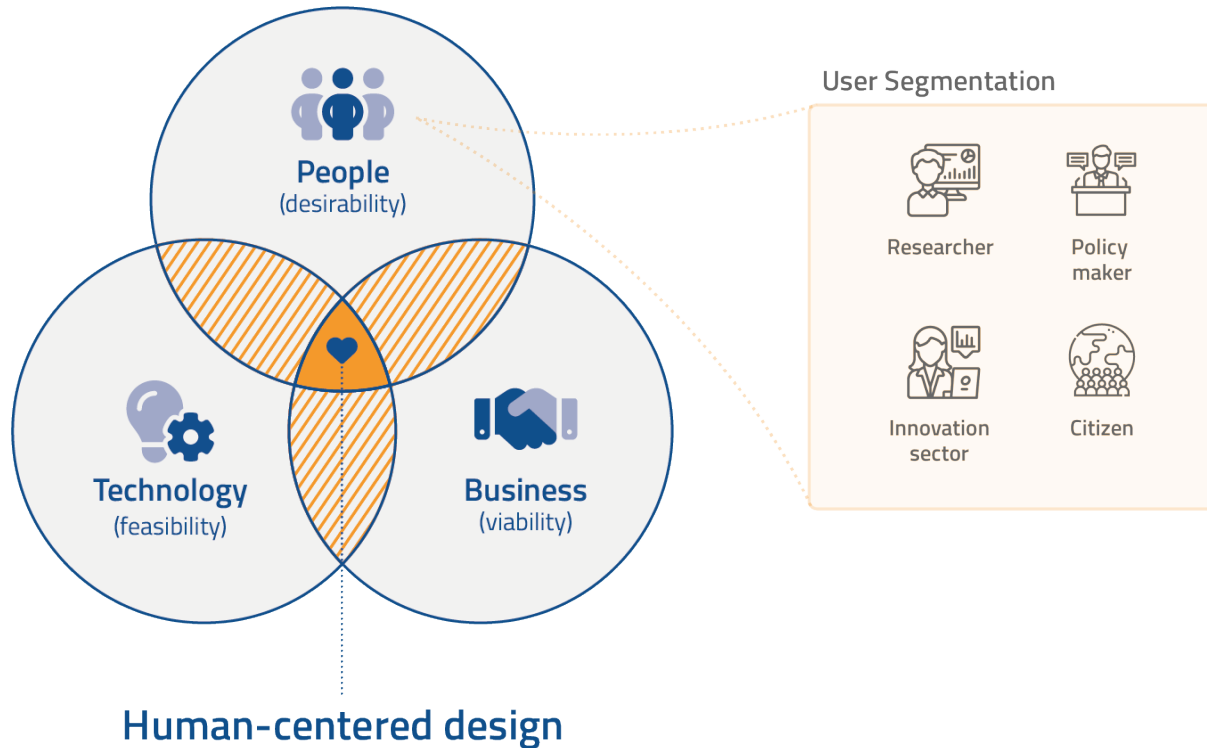
B) gestión y valoración de la **regulación hídrica** (mediante la retención de agua en suelo).



Cinclus Soluciones, Beltrán de Ceballos



Aplicaciones con un impacto significativo



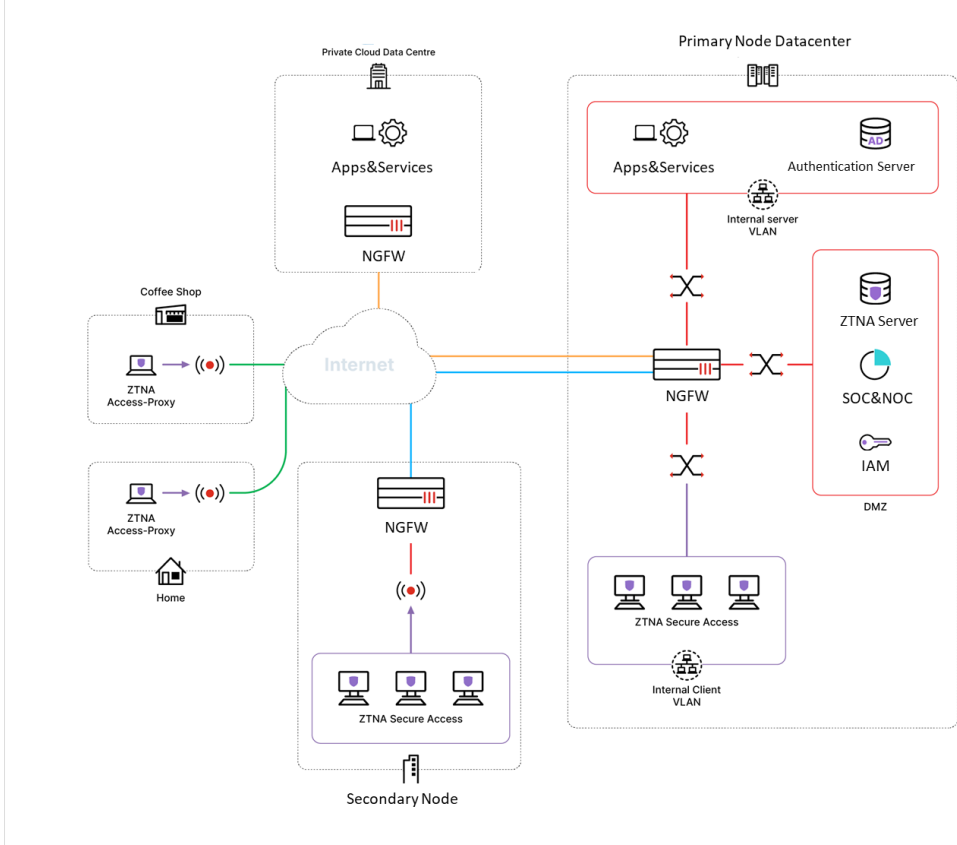
Software que se adapta al usuario

The screenshot displays the My LifeWatch ERIC dashboard. On the left is a navigation menu with options: Dashboard, My data, Cloud, Dataset Search, Traceability Tool, Tesseract Products, VREs, Ailanthus, Run a new workflow, Information page, ARMS, Biotope, Crustaceans, Metabarcoding, Agroecology - Smart food, EcoPortal, and Metadata Catalogue. The main content area is titled 'Dashboard' and features a 'My interests map' showing a world map with colored dots representing data points. Below the map are filters for 'Ungrouped (13)', 'VRE (1)', 'Research Infrastructure (5)', 'Government Entity (3)', and 'Living Lab (4)'. To the right of the map are two panels: 'My Network' showing a graph with nodes for Srimoyee Basu, Iina Druzhina, Herbert Zettel, K. A. Subramanian, and Alice Lacity; and 'Biodiversity data' showing 114,212,835 Occurrence records and 1,506 Datasets.

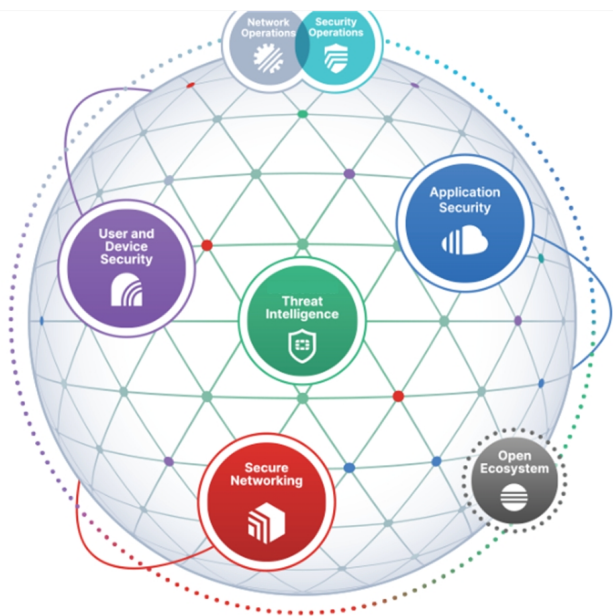
User Segmentation



ZTNA & Distributed SD-WAN Architecture



Security Operations Center - Centralized Services & Solutions



Identity Access Management & MFA

Privileged Access Management

Vulnerabilities assessment and management

Endpoint protection platform

Extended detection & response

Perimetral & Network Defense-in-Depth

IDS&IPS inspection and protection

SOC&NOC Monitoring and analytics 24x7

SIEM with ML, BigData and AI technologies

Threat Intelligence Platform

¡Muchas Gracias!

Antonio Domínguez
[a.dominguez@geserisk.es]



Jesús Gallardo [jesus.gallardo@lifewatch.eu]



Antoni Huguet
[antoni@nonsensedevelopment.com]

Antonio José Sáenz-Albanés
[aj.saenz@lifewatch.eu]

